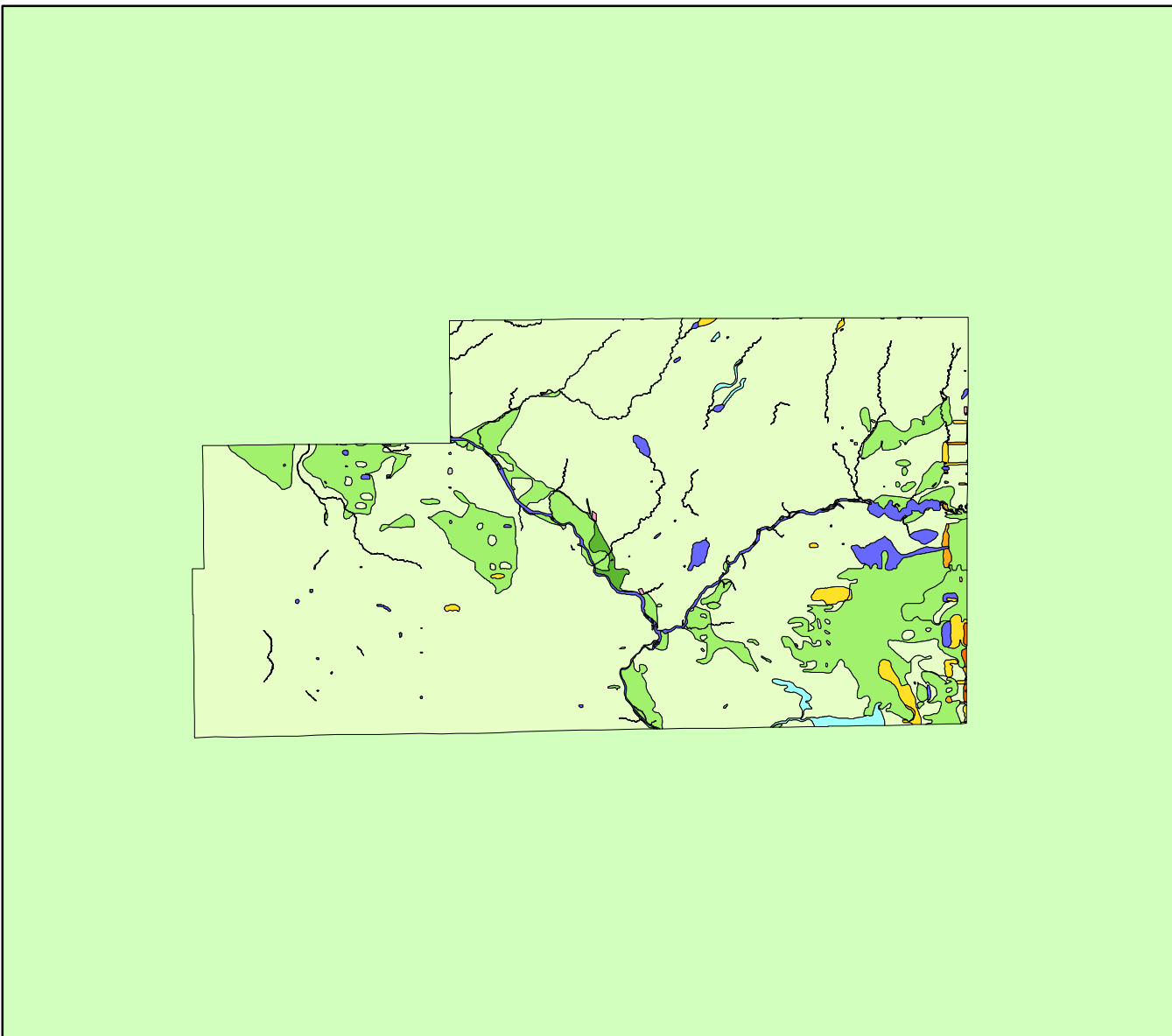


# Land Cover of Kankakee County, Illinois in the Early 1800's



**Legend**

- barrens
- bottomland
- cultural
- forest
- marsh
- other wetland
- prairie
- slough
- topo/geo
- water
- wet prairie
- swamp

MAP	ACRES	HECTARES	PERCENT
barrens	0	0	0
bottomland	1236	500	0.3
cultural	108	44	0
forest	57008	23071	13.1
marsh	283	114	0.1
other wetland	0	0	0
prairie	361532	146307	83
slough	2201	891	0.5
swamp	3818	1545	0.9
topo/ geo	259	105	0.1
water	8601	3481	2
wet prairie	618	250	0.1
<b>TOTAL</b>	<b>435664</b>	<b>176308</b>	<b>100</b>

