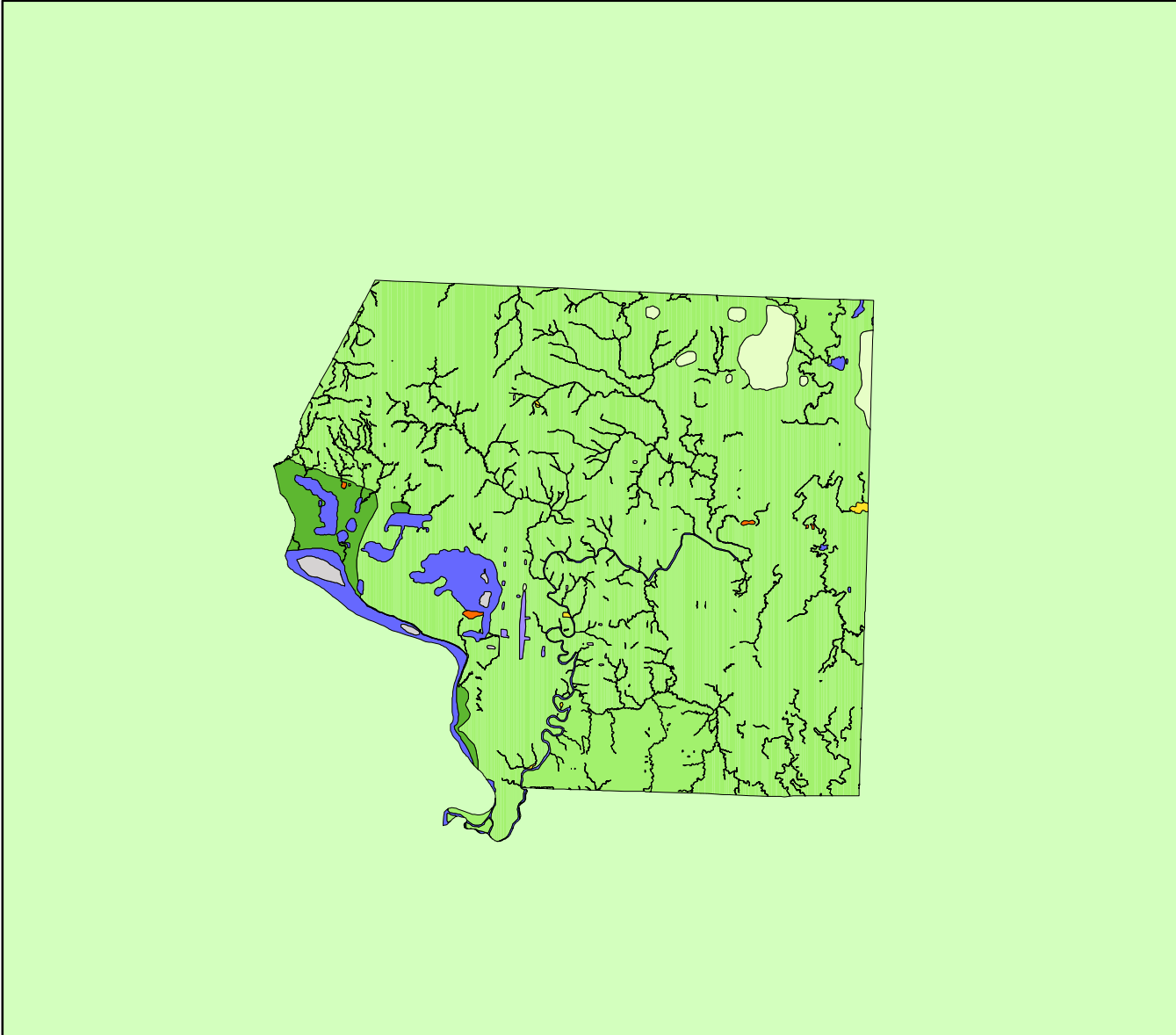


Land Cover of Jackson County, Illinois in the Early 1800's



Legend

- barrens
- bottomland
- cultural
- forest
- marsh
- other wetland
- prairie
- slough
- topo/geo
- water
- wet prairie
- swamp

| MAP | ACRES | HECTARES | PERCENT |
|---------------|---------------|---------------|------------|
| barrens | 0 | 0 | 0 |
| bottomland | 9741 | 3942 | 2.5 |
| cultural | 0 | 0 | 0 |
| forest | 346206 | 140105 | 89.3 |
| marsh | 292 | 118 | 0.1 |
| other wetland | 661 | 267 | 0.2 |
| prairie | 7515 | 3041 | 1.9 |
| slough | 11 | 5 | 0 |
| swamp | 337 | 136 | 0.1 |
| topo/ geo | 1734 | 702 | 0.4 |
| water | 21016 | 8505 | 5.4 |
| wet prairie | 0 | 0 | 0 |
| TOTAL | 387512 | 156821 | 100 |

