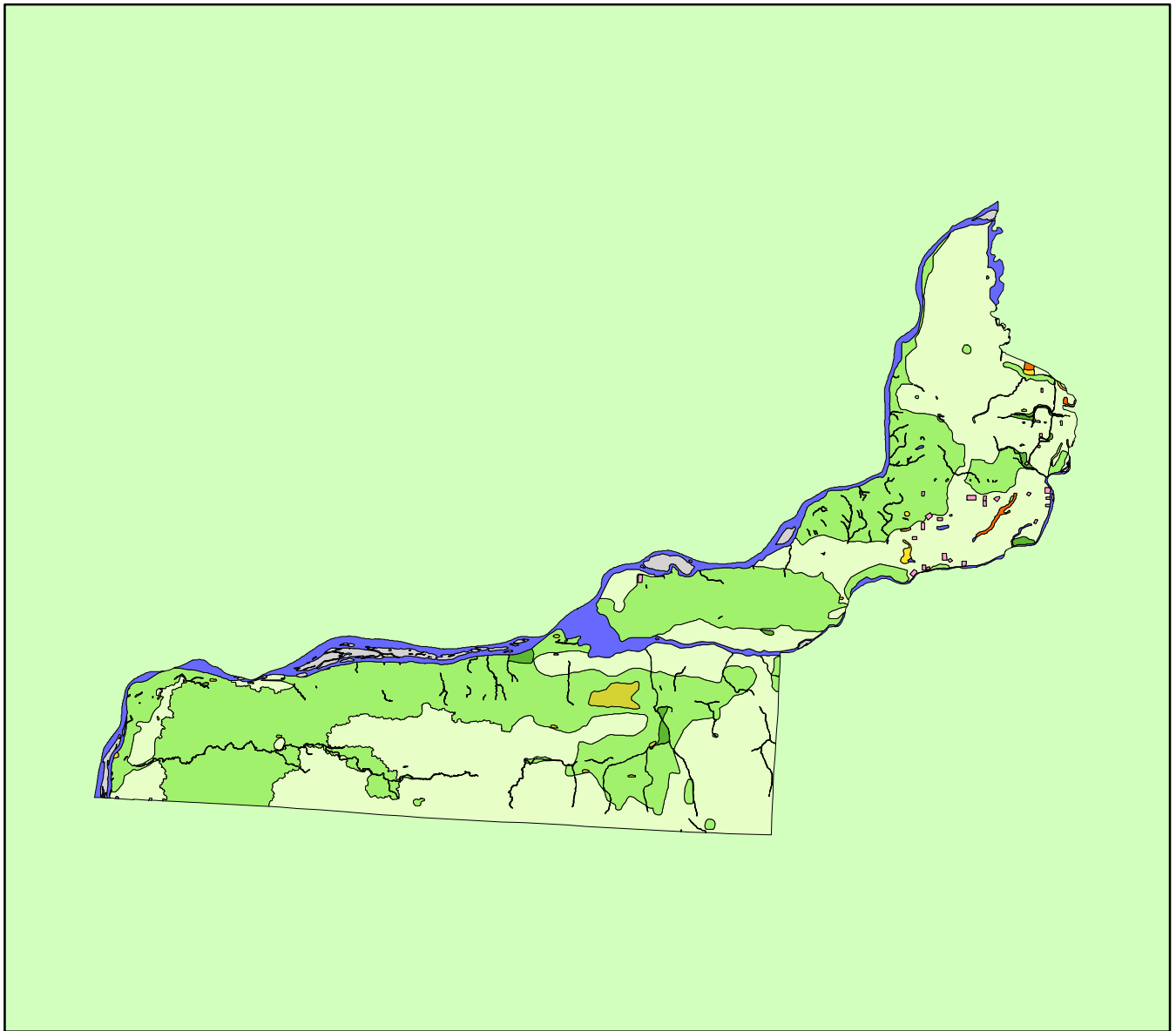


# Land Cover of Rock Island County, Illinois in the Early 1800's



**Legend**

- barrens
- bottomland
- cultural
- forest
- marsh
- other wetland
- prairie
- slough
- topo/geo
- water
- wet prairie
- swamp

MAP	ACRES	HECTARES	PERCENT
barrens	1579	639	0.5
bottomland	1591	644	0.5
cultural	639	259	0.2
forest	119370	48308	41.3
marsh	453	183	0.2
other wetland	0	0	0
prairie	139184	56326	48.1
slough	180	73	0.1
swamp	485	196	0.2
topo/ geo	4183	1693	1.4
water	21649	8761	7.5
wet prairie	29	12	0
<b>TOTAL</b>	<b>289341</b>	<b>117093</b>	<b>100</b>

