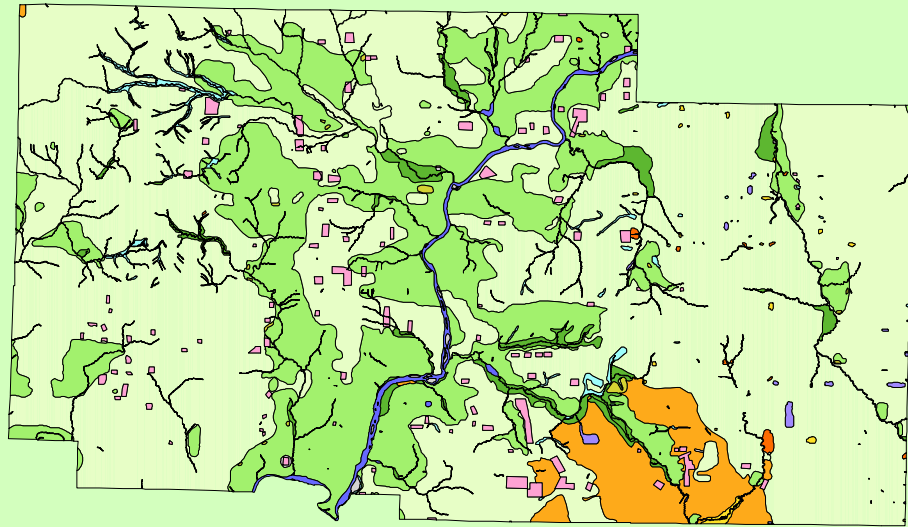


# Land Cover of Ogle County, Illinois in the Early 1800's



## Legend

- barrens
- bottomland
- cultural
- forest
- marsh
- other wetland
- prairie
- slough
- topo/geo
- water
- wet prairie
- swamp

MAP	ACRES	HECTARES	PERCENT
barrens	571	231	0.1
bottomland	8934	3616	1.8
cultural	6414	2596	1.3
forest	115781	46855	23.7
marsh	491	199	0.1
other wetland	680	275	0.1
prairie	323618	130964	66.2
slough	3869	1566	0.8
swamp	664	269	0.1
topo/ geo	534	216	0.1
water	7178	2905	1.5
wet prairie	19890	8049	4.1
<b>TOTAL</b>	<b>488624</b>	<b>197740</b>	<b>100</b>

