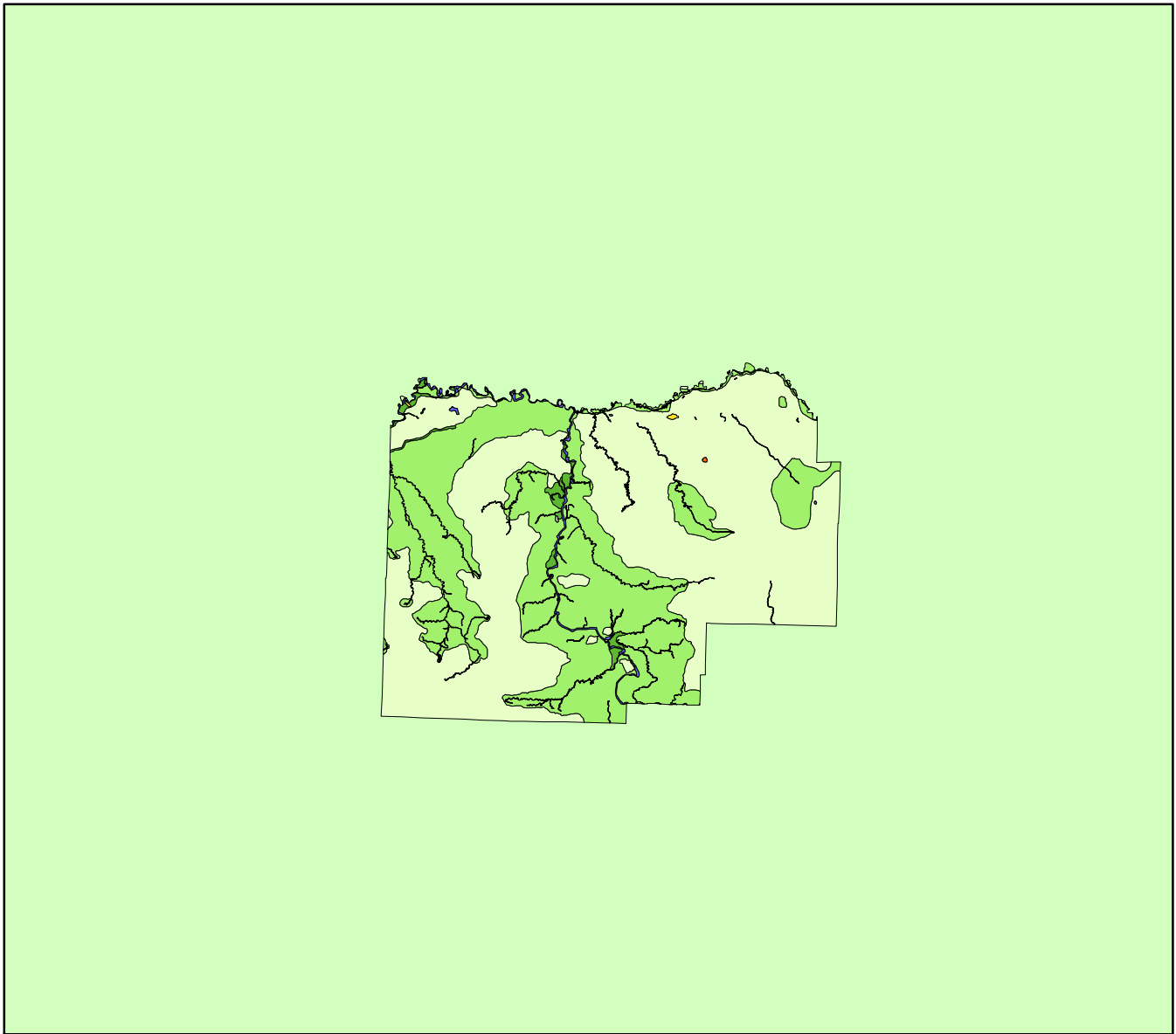


Land Cover of Menard County, Illinois in the Early 1800's



Legend

- barrens
- bottomland
- cultural
- forest
- marsh
- other wetland
- prairie
- slough
- topo/geo
- water
- wet prairie
- swamp

MAP	ACRES	HECTARES	PERCENT
barrens	0	0	0
bottomland	1931	781	1
cultural	0	0	0
forest	77226	31252	38.2
marsh	25	10	0
other wetland	0	0	0
prairie	119294	48277	59.1
slough	106	43	0.1
swamp	79	32	0
topo/ geo	43	17	0
water	3205	1297	1.6
wet prairie	0	0	0
TOTAL	201910	81710	100

