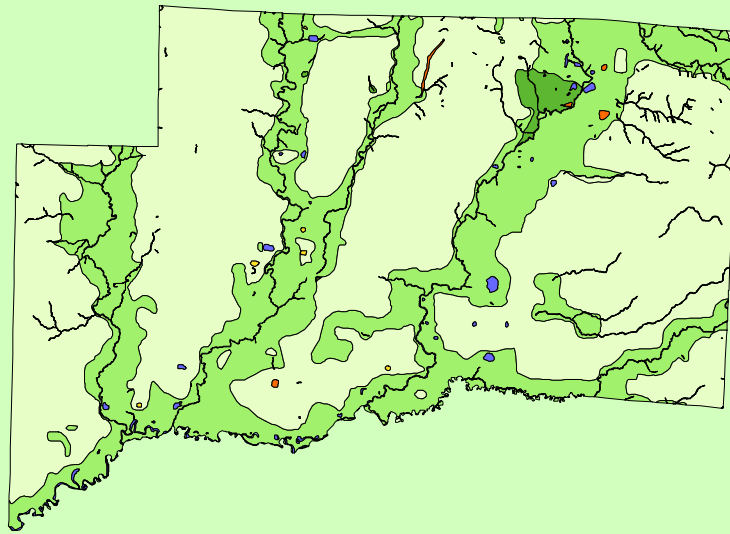


Land Cover of Clinton County, Illinois in the Early 1800's



Legend

- barrens
- bottomland
- cultural
- forest
- marsh
- other wetland
- prairie
- slough
- topo/geo
- water
- wet prairie
- swamp

MAP	ACRES	HECTARES	PERCENT
barrens	0	0	0
bottomland	2723	1102	0.8
cultural	0	0	0
forest	104965	42478	32.6
marsh	319	129	0.1
other wetland	22	9	0
prairie	209111	84625	64.9
slough	44	18	0
swamp	132	53	0
topo/ geo	2	1	0
water	4838	1958	1.5
wet prairie	0	0	0
TOTAL	322156	130372	100

