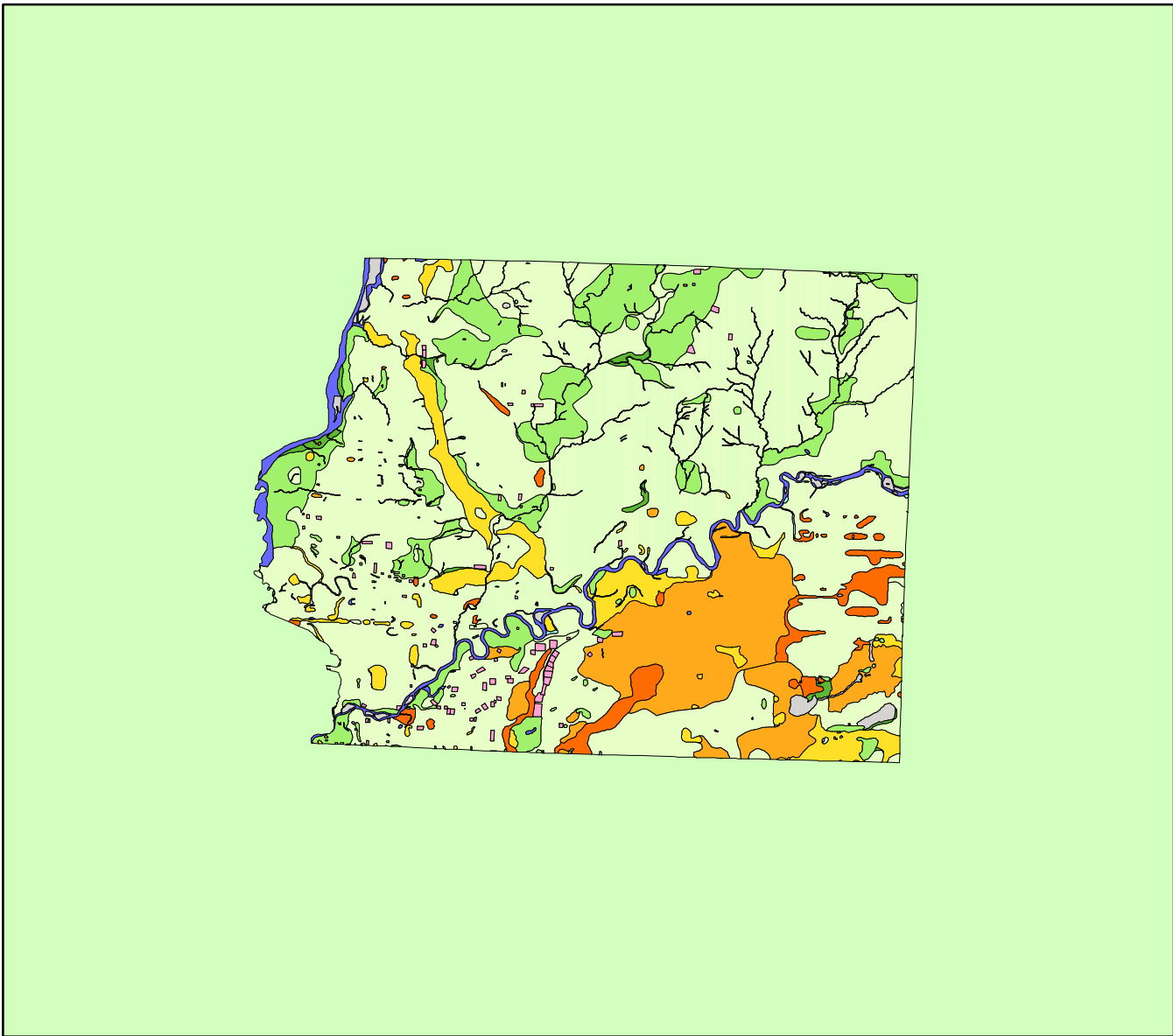


Land Cover of Whiteside County, Illinois in the Early 1800's



Legend

- barrens
- bottomland
- cultural
- forest
- marsh
- other wetland
- prairie
- slough
- topo/geo
- water
- wet prairie
- swamp

MAP	ACRES	HECTARES	PERCENT
barrens	0	0	0
bottomland	2418	978	0.5
cultural	2721	1101	0.6
forest	56101	22703	12.6
marsh	11853	4797	2.7
other wetland	34	14	0
prairie	288068	116577	64.5
slough	436	176	0.1
swamp	23903	9673	5.4
topo/ geo	3691	1494	0.8
water	11912	4821	2.7
wet prairie	45613	18459	10.2
TOTAL	446750	180794	100

