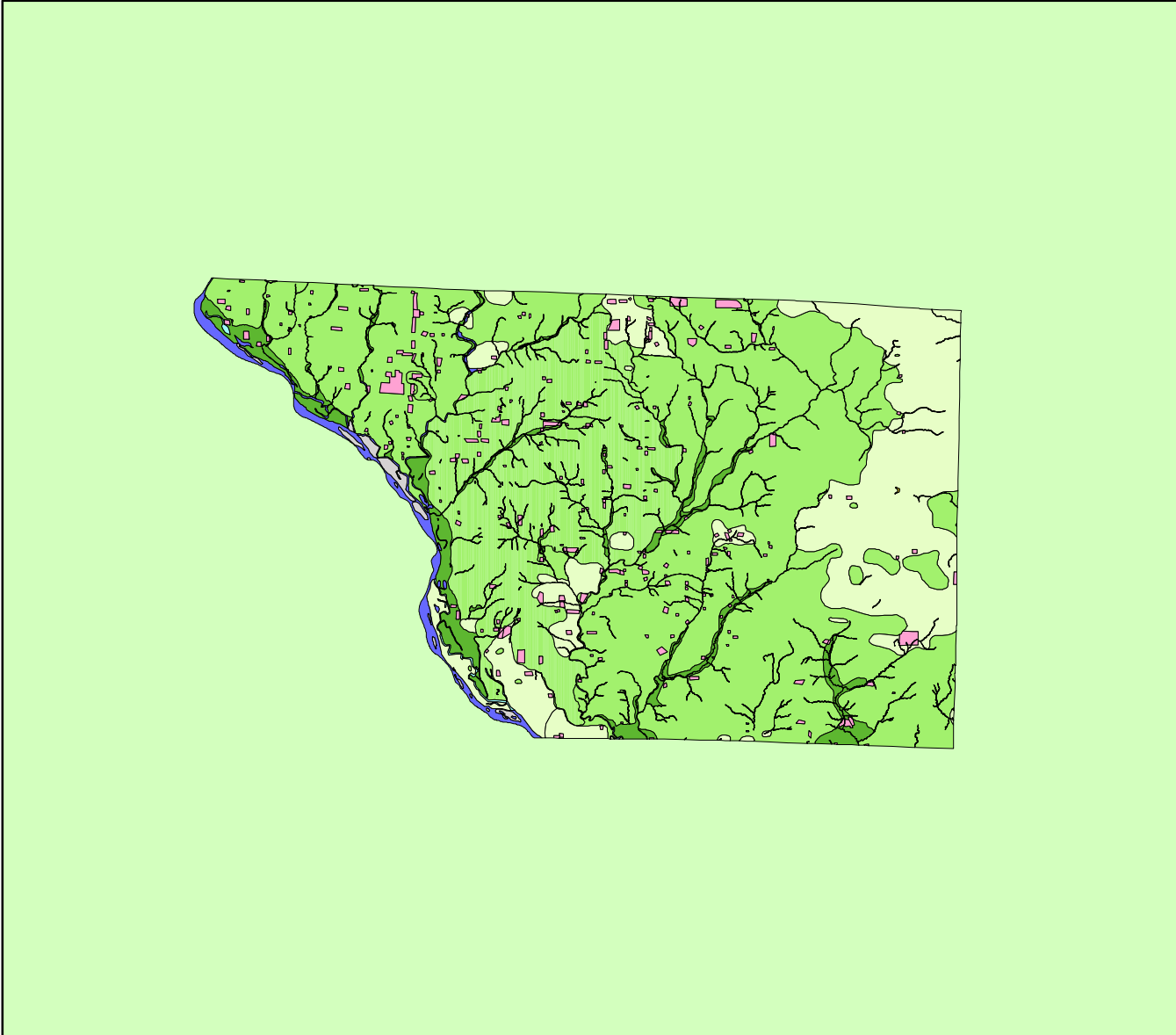


Land Cover of Jo Daviess County, Illinois in the Early 1800's



Legend

- barrens
- bottomland
- cultural
- forest
- marsh
- other wetland
- prairie
- slough
- topo/geo
- water
- wet prairie
- swamp

MAP	ACRES	HECTARES	PERCENT
barrens	0	0	0
bottomland	18098	7324	4.6
cultural	7677	3107	1.9
forest	285295	115455	72
marsh	5	2	0
other wetland	0	0	0
prairie	70060	28352	17.7
slough	796	322	0.2
swamp	17	7	0
topo/ geo	1810	733	0.5
water	12317	4985	3.1
wet prairie	0	0	0
TOTAL	396077	160287	100

