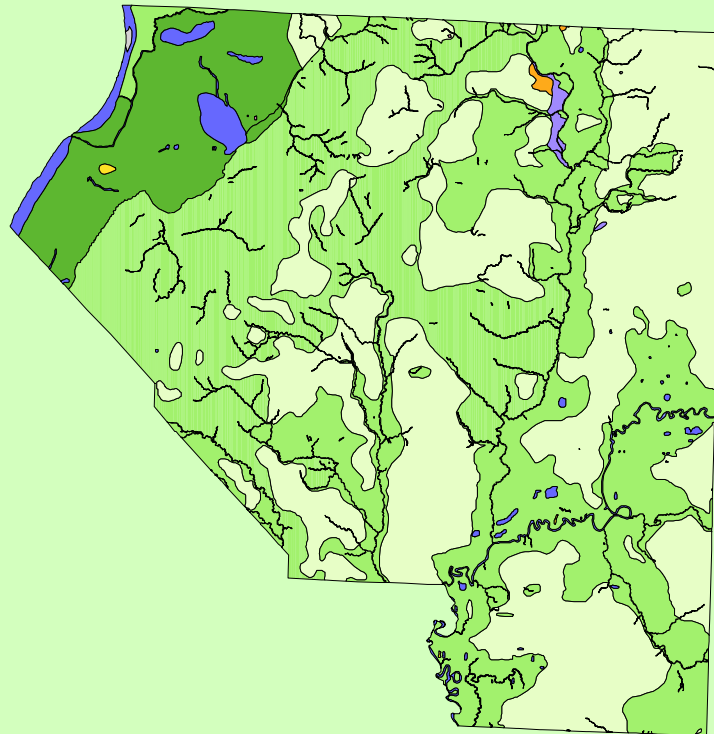


# Land Cover of St. Clair County, Illinois in the Early 1800's



**Legend**

- barrens
- bottomland
- cultural
- forest
- marsh
- other wetland
- prairie
- slough
- topo/geo
- water
- wet prairie
- swamp

MAP	ACRES	HECTARES	PERCENT
barrens	0	0	0
bottomland	37352	15116	8.7
cultural	15	6	0
forest	217133	87871	50.3
marsh	0	0	0
other wetland	1178	477	0.3
prairie	162661	65827	37.7
slough	5	2	0
swamp	168	68	0
topo/ geo	131	53	0
water	12588	5094	2.9
wet prairie	434	176	0.1
<b>TOTAL</b>	<b>431667</b>	<b>174690</b>	<b>100</b>

