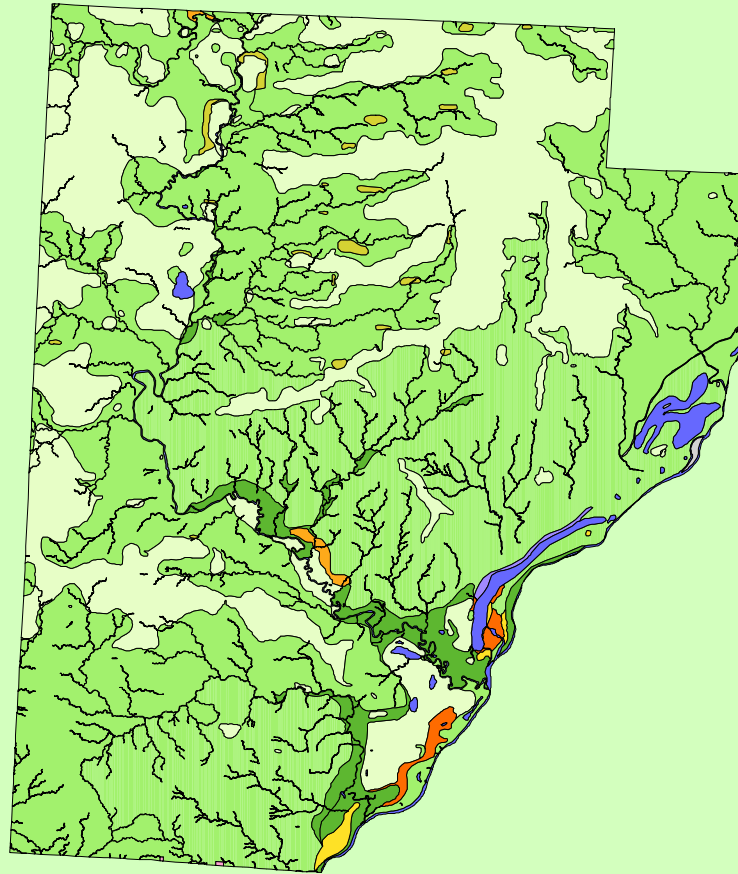


Land Cover of Fulton County, Illinois in the Early 1800's



Legend

- barrens
- bottomland
- cultural
- forest
- marsh
- other wetland
- prairie
- slough
- topo/geo
- water
- wet prairie
- swamp

MAP	ACRES	HECTARES	PERCENT
barrens	2601	1053	0.5
bottomland	16675	6748	2.9
cultural	45	18	0
forest	366896	148478	64.9
marsh	2220	898	0.4
other wetland	658	266	0.1
prairie	157008	63539	27.8
slough	73	29	0
swamp	1429	578	0.3
topo/ geo	416	168	0.1
water	16501	6678	2.9
wet prairie	1035	419	0.2
TOTAL	565557	228874	100

