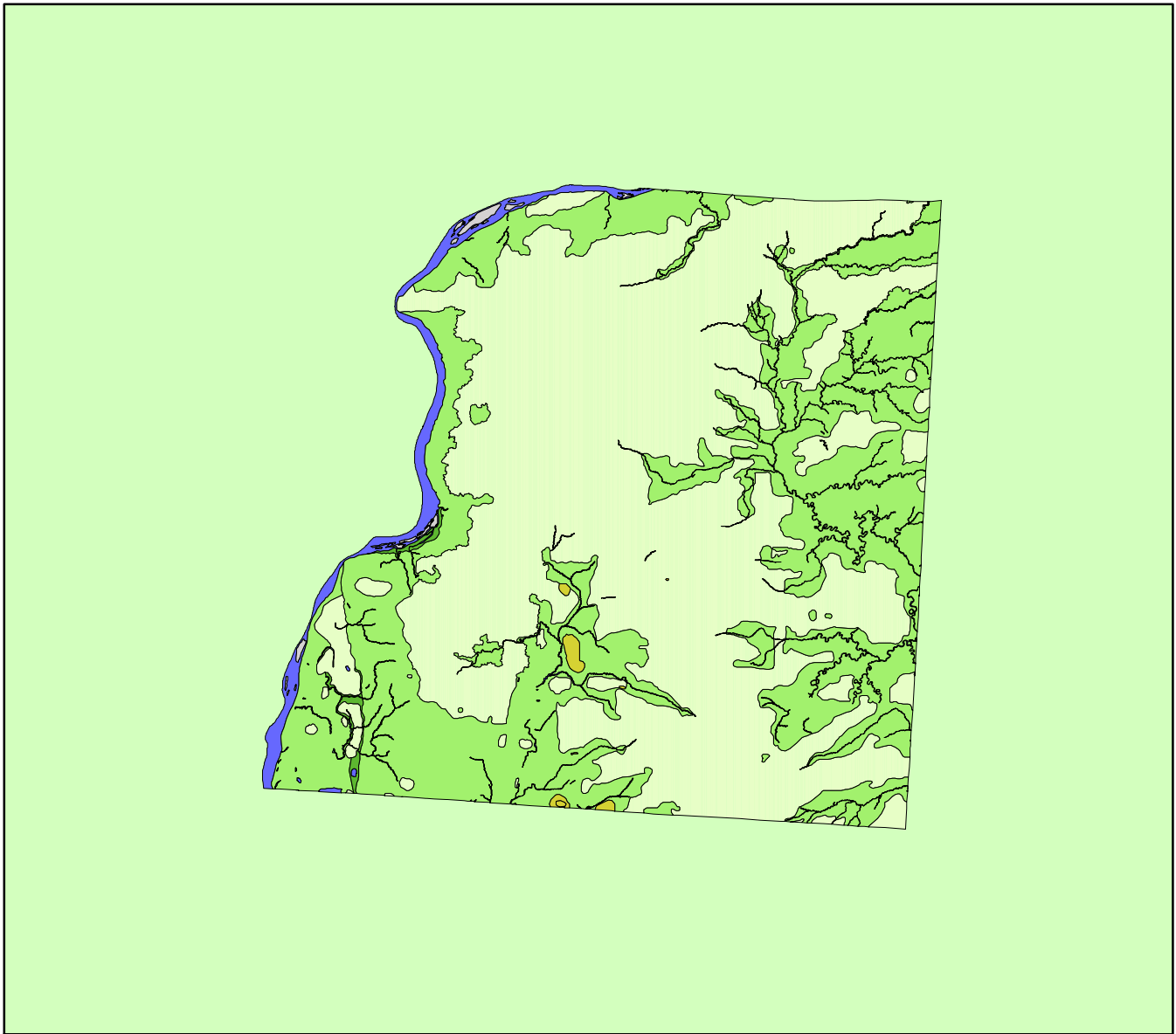


# Land Cover of Hancock County, Illinois in the Early 1800's



**Legend**

- barrens
- bottomland
- cultural
- forest
- marsh
- other wetland
- prairie
- slough
- topo/geo
- water
- wet prairie
- swamp

MAP	ACRES	HECTARES	PERCENT
barrens	1509	611	0.3
bottomland	1695	686	0.3
cultural	13	5	0
forest	197191	79801	37.8
marsh	0	0	0
other wetland	0	0	0
prairie	303796	122942	58.2
slough	299	121	0.1
swamp	6	2	0
topo/ geo	1344	544	0.3
water	16381	6629	3.1
wet prairie	0	0	0
<b>TOTAL</b>	<b>522235</b>	<b>211342</b>	<b>100</b>

