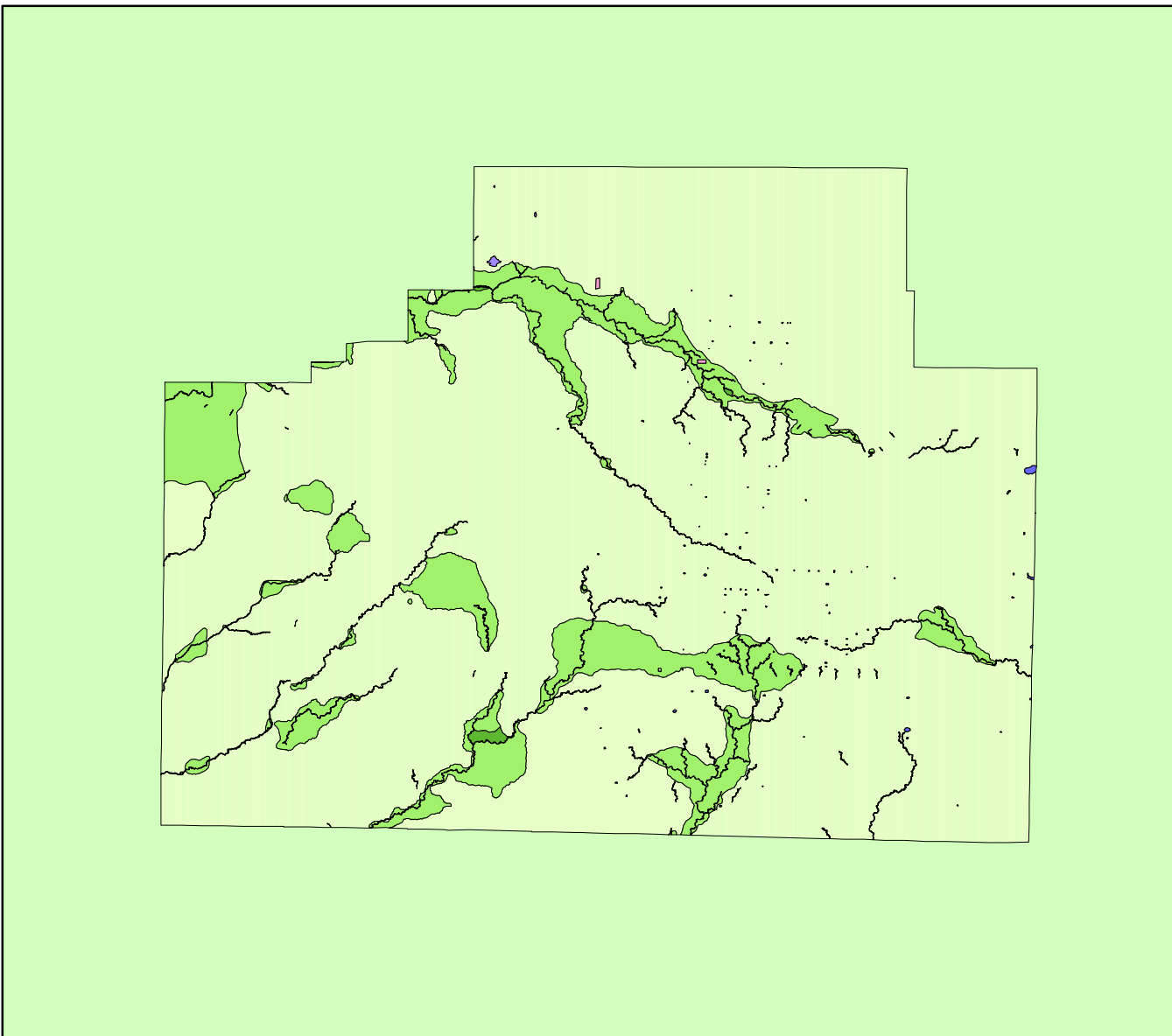


# Land Cover of McLean County, Illinois in the Early 1800's



**Legend**

- barrens
- bottomland
- cultural
- forest
- marsh
- other wetland
- prairie
- slough
- topo/geo
- water
- wet prairie
- swamp

MAP	ACRES	HECTARES	PERCENT
barrens	0	0	0
bottomland	764	309	0.1
cultural	107	43	0
forest	84382	34148	11.1
marsh	0	0	0
other wetland	120	49	0
prairie	669888	271095	88.3
slough	0	0	0
swamp	0	0	0
topo/ geo	0	0	0
water	3816	1544	0.5
wet prairie	0	0	0
<b>TOTAL</b>	<b>759078</b>	<b>307189</b>	<b>100</b>

