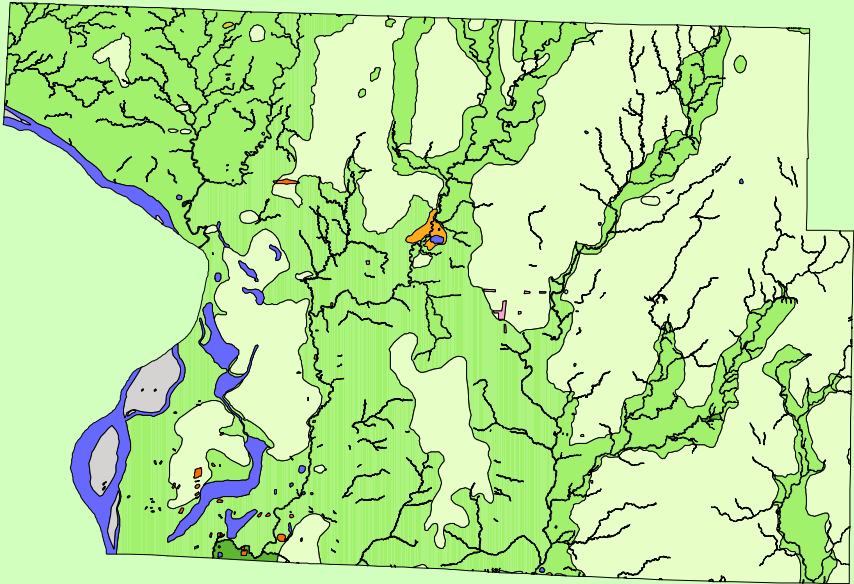


Land Cover of Madison County, Illinois in the Early 1800's



Legend

- barrens
- bottomland
- cultural
- forest
- marsh
- other wetland
- prairie
- slough
- topo/geo
- water
- wet prairie
- swamp

MAP	ACRES	HECTARES	PERCENT
barrens	49	20	0
bottomland	852	345	0.2
cultural	194	78	0
forest	221870	89788	46.8
marsh	466	189	0.1
other wetland	38	16	0
prairie	226080	91492	47.7
slough	12	5	0
swamp	0	0	0
topo/ geo	4650	1882	1
water	19139	7745	4
wet prairie	713	288	0.2
TOTAL	474063	191847	100

