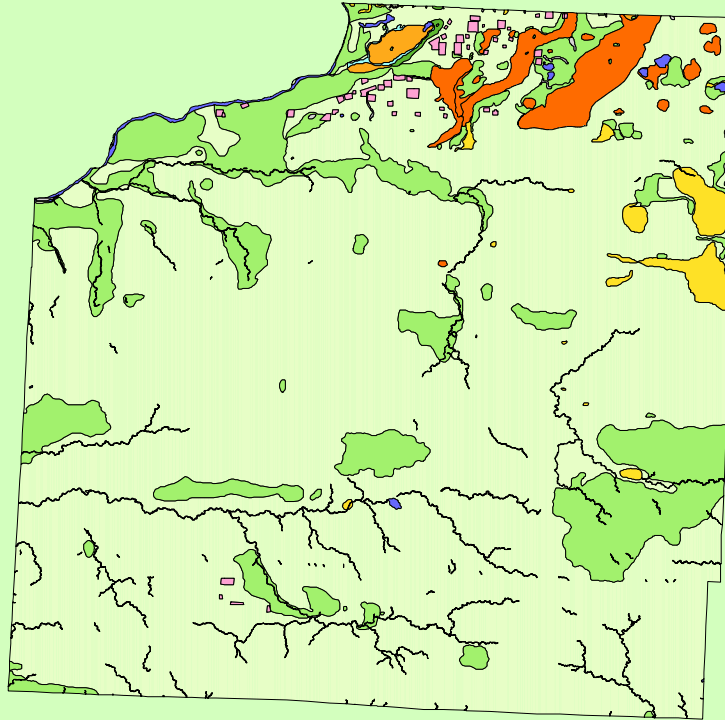


# Land Cover of Henry County, Illinois in the Early 1800's



## Legend

- barrens
- bottomland
- cultural
- forest
- marsh
- other wetland
- prairie
- slough
- topo/geo
- water
- wet prairie
- swamp

MAP	ACRES	HECTARES	PERCENT
barrens	0	0	0
bottomland	398	161	0.1
cultural	2063	835	0.4
forest	75898	30715	14.4
marsh	13375	5413	2.5
other wetland	6	3	0
prairie	422524	170990	80
slough	396	160	0.1
swamp	7516	3042	1.4
topo/ geo	292	118	0.1
water	4081	1651	0.8
wet prairie	1876	759	0.4
<b>TOTAL</b>	<b>528425</b>	<b>213847</b>	<b>100</b>

