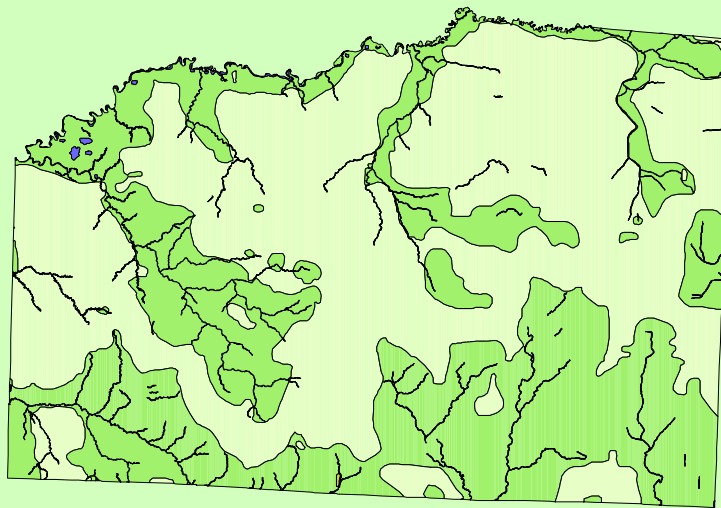


Land Cover of Washington County, Illinois in the Early 1800's



Legend

- barrens
- bottomland
- cultural
- forest
- marsh
- other wetland
- prairie
- slough
- topo/geo
- water
- wet prairie
- swamp

MAP	ACRES	HECTARES	PERCENT
barrens	43	18	0
bottomland	0	0	0
cultural	0	0	0
forest	154412	62489	42.8
marsh	0	0	0
other wetland	1	0	0
prairie	203098	82191	56.3
slough	0	0	0
swamp	0	0	0
topo/ geo	0	0	0
water	3441	1393	1
wet prairie	0	0	0
TOTAL	360996	146090	100

