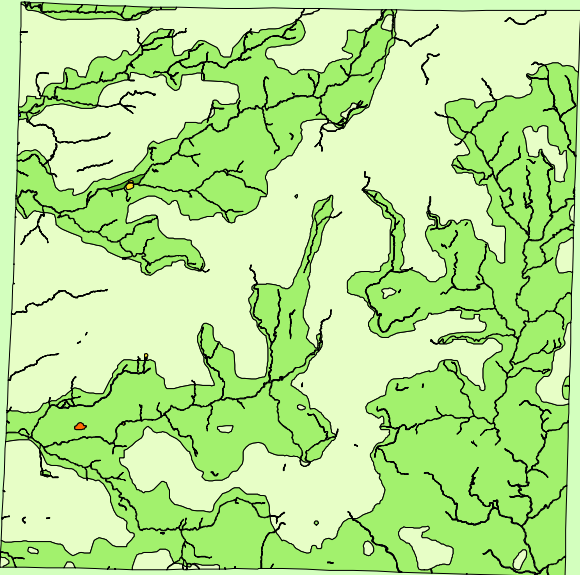


Land Cover of Marion County, Illinois in the Early 1800's



Legend

- barrens
- bottomland
- cultural
- forest
- marsh
- other wetland
- prairie
- slough
- topo/geo
- water
- wet prairie
- swamp

MAP	ACRES	HECTARES	PERCENT
barrens	0	0	0
bottomland	190	77	0.1
cultural	0	0	0
forest	180005	72846	48.8
marsh	65	26	0
other wetland	7	3	0
prairie	183912	74427	49.9
slough	0	0	0
swamp	80	32	0
topo/ geo	0	0	0
water	4302	1741	1.2
wet prairie	0	0	0
TOTAL	368561	149152	100

