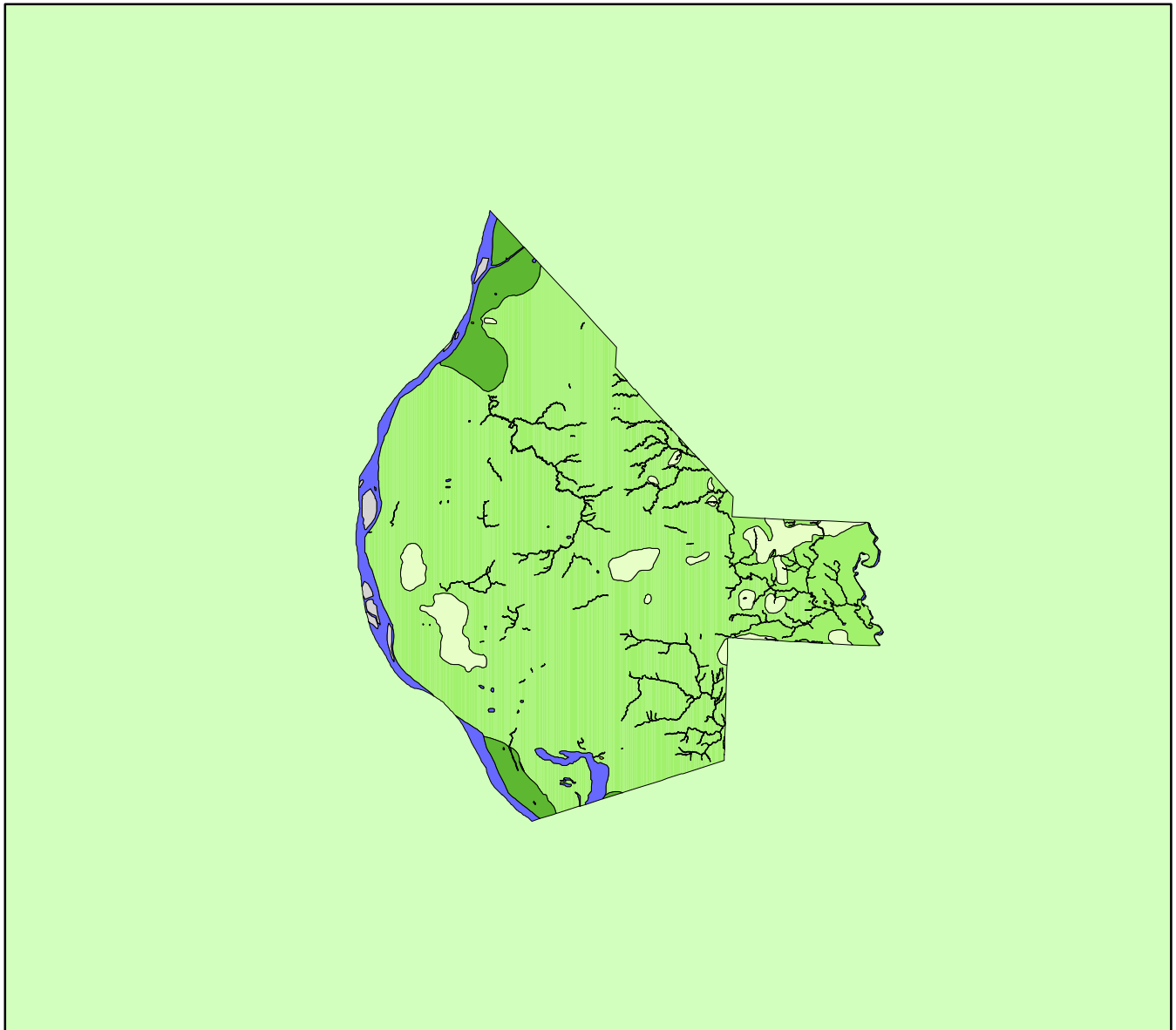


# Land Cover of Monroe County, Illinois in the Early 1800's



**Legend**

- barrens
- bottomland
- cultural
- forest
- marsh
- other wetland
- prairie
- slough
- topo/geo
- water
- wet prairie
- swamp

MAP	ACRES	HECTARES	PERCENT
barrens	0	0	0
bottomland	12381	5011	4.9
cultural	0	0	0
forest	214240	86700	84.1
marsh	18	7	0
other wetland	17	7	0
prairie	13028	5272	5.1
slough	0	0	0
swamp	15	6	0
topo/ geo	1711	693	0.7
water	13434	5437	5.3
wet prairie	0	0	0
<b>TOTAL</b>	<b>254844</b>	<b>103132</b>	<b>100</b>

