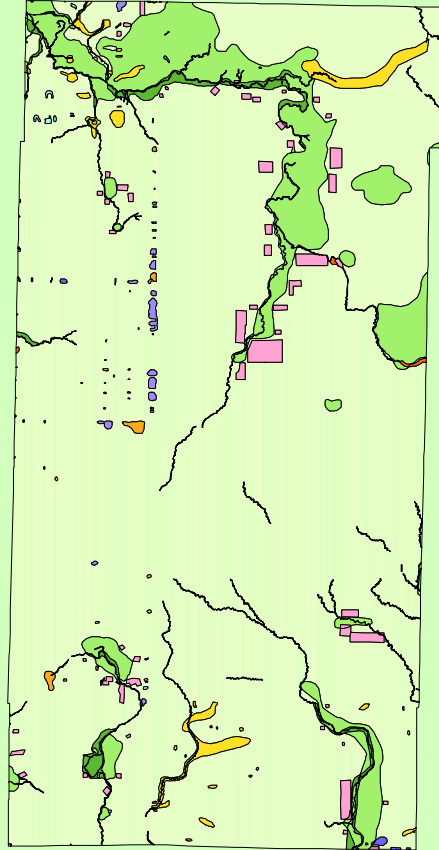


# Land Cover of Dekalb County, Illinois in the Early 1800's



**Legend**

- barrens
- bottomland
- cultural
- forest
- marsh
- other wetland
- prairie
- slough
- topo/geo
- water
- wet prairie
- swamp

MAP	ACRES	HECTARES	PERCENT
barrens	0	0	0
bottomland	3546	1435	0.9
cultural	5234	2118	1.3
forest	35913	14534	8.8
marsh	153	62	0
other wetland	795	322	0.2
prairie	352956	142837	86.9
slough	221	89	0.1
swamp	4851	1963	1.2
topo/ geo	3	1	0
water	1934	783	0.5
wet prairie	435	176	0.1
<b>TOTAL</b>	<b>406041</b>	<b>164320</b>	<b>100</b>

