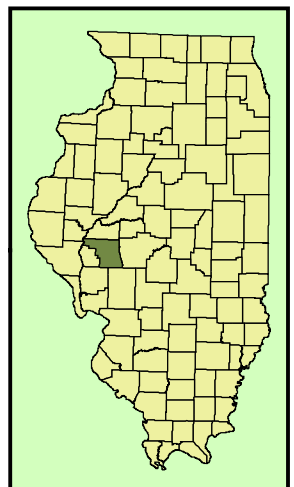
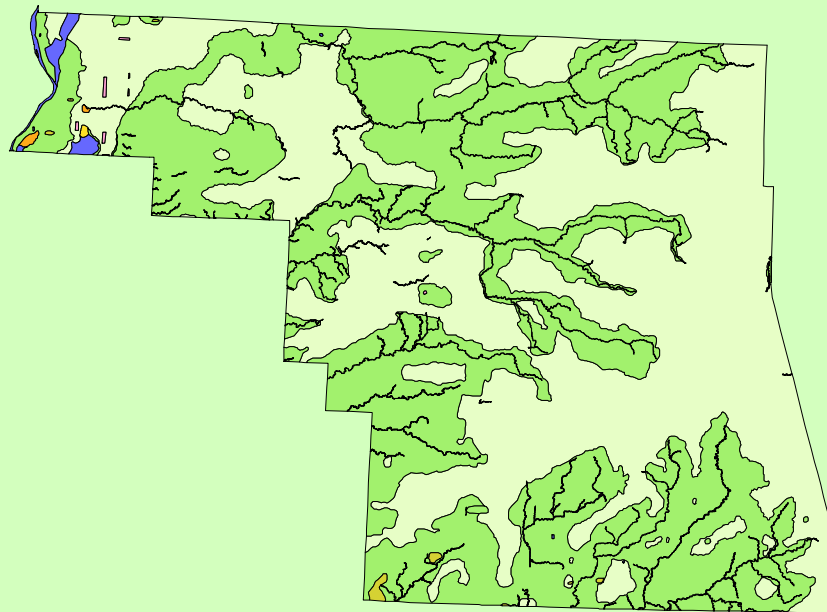


Land Cover of Morgan County, Illinois in the Early 1800's



Legend

- barrens
- bottomland
- cultural
- forest
- marsh
- other wetland
- prairie
- slough
- topo/geo
- water
- wet prairie
- swamp

MAP	ACRES	HECTARES	PERCENT
barrens	570	231	0.2
bottomland	24	10	0
cultural	186	75	0.1
forest	174511	70622	47.5
marsh	0	0	0
other wetland	0	0	0
prairie	185978	75263	50.7
slough	0	0	0
swamp	94	38	0
topo/geo	8	3	0
water	5450	2206	1.5
wet prairie	225	91	0.1
TOTAL	367046	148539	100