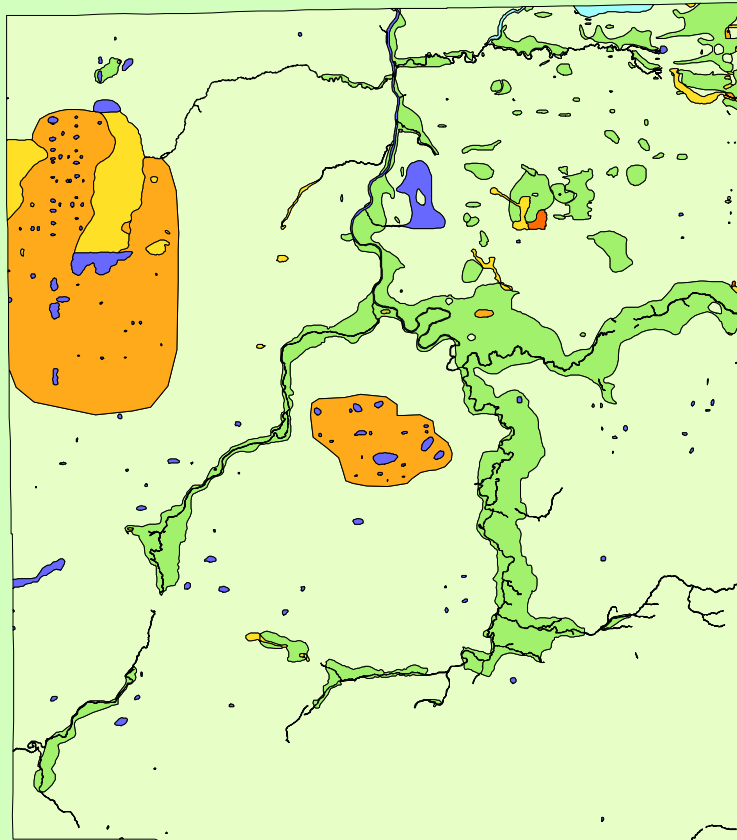


Land Cover of Iroquois County, Illinois in the Early 1800's



Legend

- barrens
- bottomland
- cultural
- forest
- marsh
- other wetland
- prairie
- prairie
- slough
- topo/geo
- water
- wet prairie
- swamp

MAP	ACRES	HECTARES	PERCENT
barrens	45	18	0
bottomland	0	0	0
cultural	12	5	0
forest	63651	25759	8.9
marsh	347	141	0
other wetland	0	0	0
prairie	576899	233464	80.6
slough	854	345	0.1
swamp	10969	4439	1.5
topo/ geo	22	9	0
water	9049	3662	1.3
wet prairie	54055	21875	7.6
TOTAL	715905	289717	100

