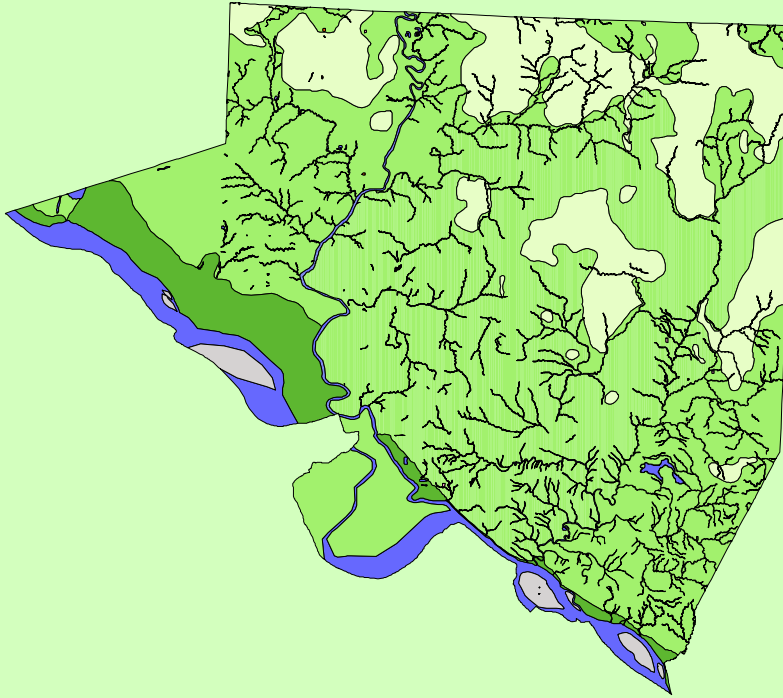


Land Cover of Randolph County, Illinois in the Early 1800's



Legend

- barrens
- bottomland
- cultural
- forest
- marsh
- other wetland
- prairie
- slough
- topo/geo
- water
- wet prairie
- swamp

MAP	ACRES	HECTARES	PERCENT
barrens	0	0	0
bottomland	21657	8764	5.7
cultural	36	15	0
forest	264909	107205	69.5
marsh	20	8	0
other wetland	9	4	0
prairie	64277	26012	16.9
slough	0	0	0
swamp	0	0	0
topo/ geo	4000	1619	1
water	26153	10584	6.9
wet prairie	0	0	0
TOTAL	381063	154211	100

