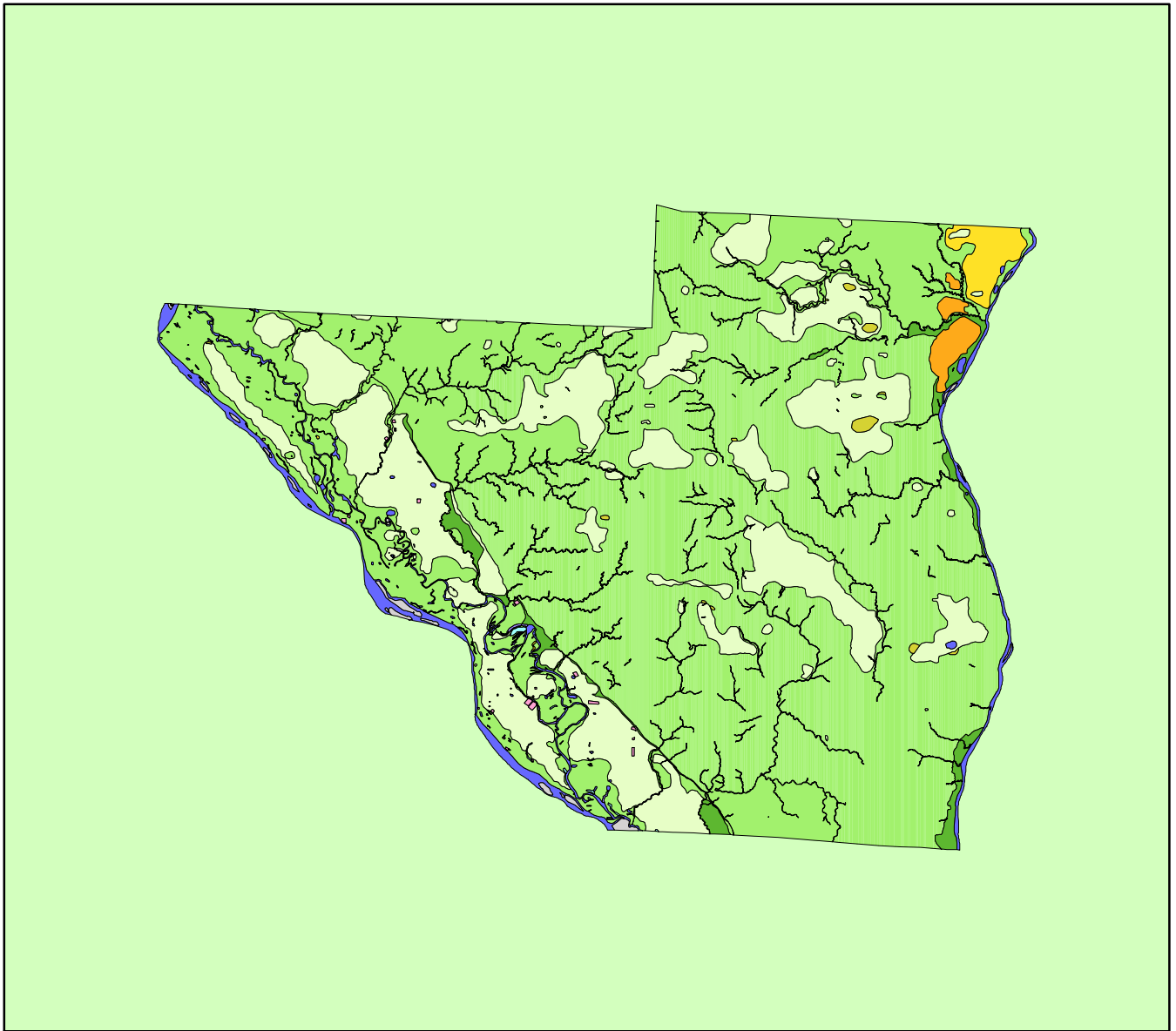


# Land Cover of Pike County, Illinois in the Early 1800's



## Legend

- barrens
- bottomland
- cultural
- forest
- marsh
- other wetland
- prairie
- slough
- topo/geo
- water
- wet prairie
- swamp

MAP	ACRES	HECTARES	PERCENT
barrens	1006	407	0.2
bottomland	8699	3520	1.6
cultural	373	151	0.1
forest	388665	157288	71.6
marsh	1	1	0
other wetland	452	183	0.1
prairie	112992	45727	20.8
slough	693	281	0.1
swamp	5396	2184	1
topo/ geo	1627	658	0.3
water	19164	7755	3.5
wet prairie	3782	1531	0.7
<b>TOTAL</b>	<b>542851</b>	<b>219685</b>	<b>100</b>

