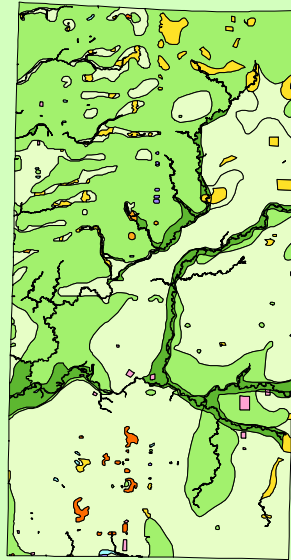


Land Cover of Boone County, Illinois in the Early 1800's



Legend

- barrens
- bottomland
- cultural
- forest
- marsh
- other wetland
- prairie
- slough
- topo/geo
- water
- wet prairie
- swamp

MAP	ACRES	HECTARES	PERCENT
barrens	0	0	0
bottomland	8801	3562	4.9
cultural	390	158	0.2
forest	73226	29633	40.6
marsh	649	263	0.4
other wetland	94	38	0.1
prairie	91266	36934	50.6
slough	221	89	0.1
swamp	4326	1751	2.4
topo/ geo	17	7	0
water	1338	542	0.7
wet prairie	134	54	0.1
TOTAL	180461	73030	100

