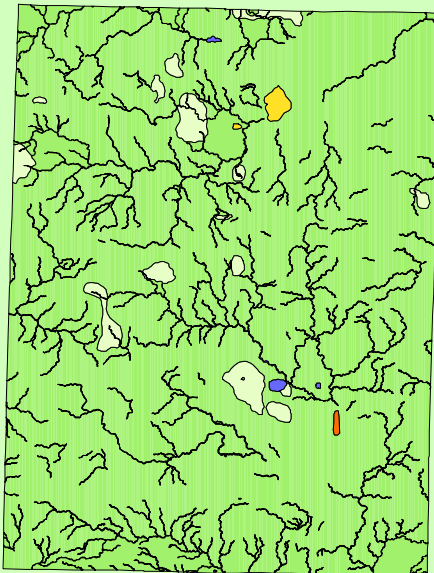


Land Cover of Hamilton County, Illinois in the Early 1800's



Legend

- barrens
- bottomland
- cultural
- forest
- marsh
- other wetland
- prairie
- slough
- topo/geo
- water
- wet prairie
- swamp

MAP	ACRES	HECTARES	PERCENT
barrens	0	0	0
bottomland	0	0	0
cultural	0	0	0
forest	264867	107188	95
marsh	145	59	0.1
other wetland	3	1	0
prairie	7757	3139	2.8
slough	0	0	0
swamp	753	305	0.3
topo/ geo	3	1	0
water	5332	2158	1.9
wet prairie	0	0	0
TOTAL	278859	112851	100

