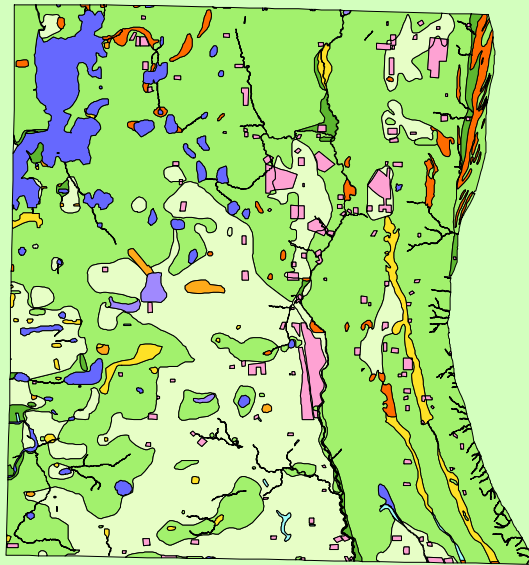


Land Cover of Lake County, Illinois in the Early 1800's



Legend

- barrens
- bottomland
- cultural
- forest
- marsh
- other wetland
- prairie
- slough
- topo/geo
- water
- wet prairie
- swamp

MAP	ACRES	HECTARES	PERCENT
barrens	0	0	0
bottomland	3691	1494	1.2
cultural	8444	3417	2.8
forest	176598	71467	58.8
marsh	5361	2169	1.8
other wetland	1049	425	0.3
prairie	82807	33511	27.6
slough	502	203	0.2
swamp	5560	2250	1.9
topo/geo	5	2	0
water	15364	6217	5.1
wet prairie	1022	414	0.3
TOTAL	300402	121569	100

