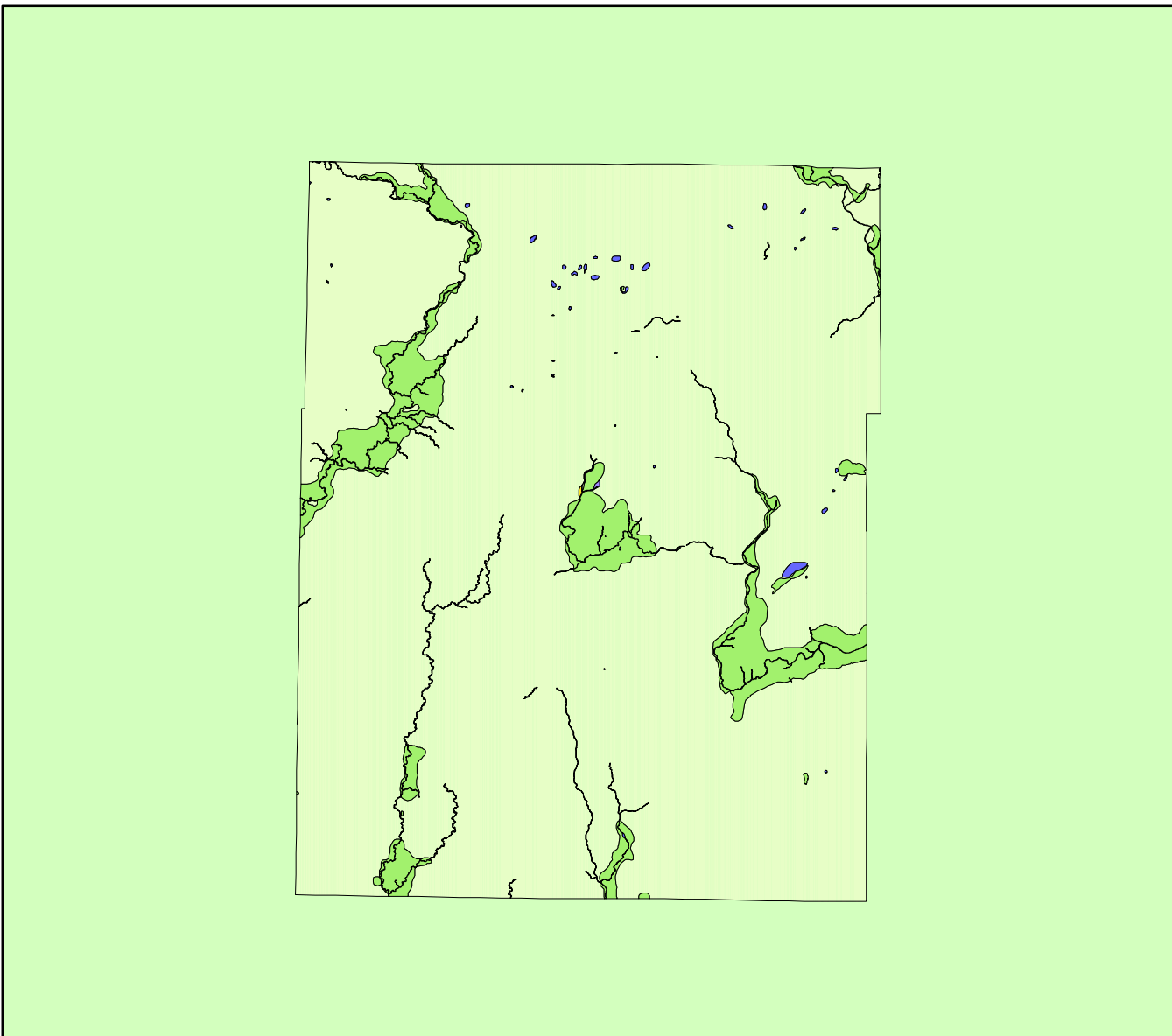


Land Cover of Champaign County, Illinois in the Early 1800's



Legend

- barrens
- bottomland
- cultural
- forest
- marsh
- other wetland
- prairie
- slough
- topo/geo
- water
- wet prairie
- swamp

MAP	ACRES	HECTARES	PERCENT
barrens	0	0	0
bottomland	0	0	0
cultural	0	0	0
forest	44844	18148	7
marsh	0	0	0
other wetland	41	17	0
prairie	590525	238978	92.5
slough	0	0	0
swamp	40	16	0
topo/ geo	0	0	0
water	3124	1264	0.5
wet prairie	0	0	0
TOTAL	638574	258423	100

