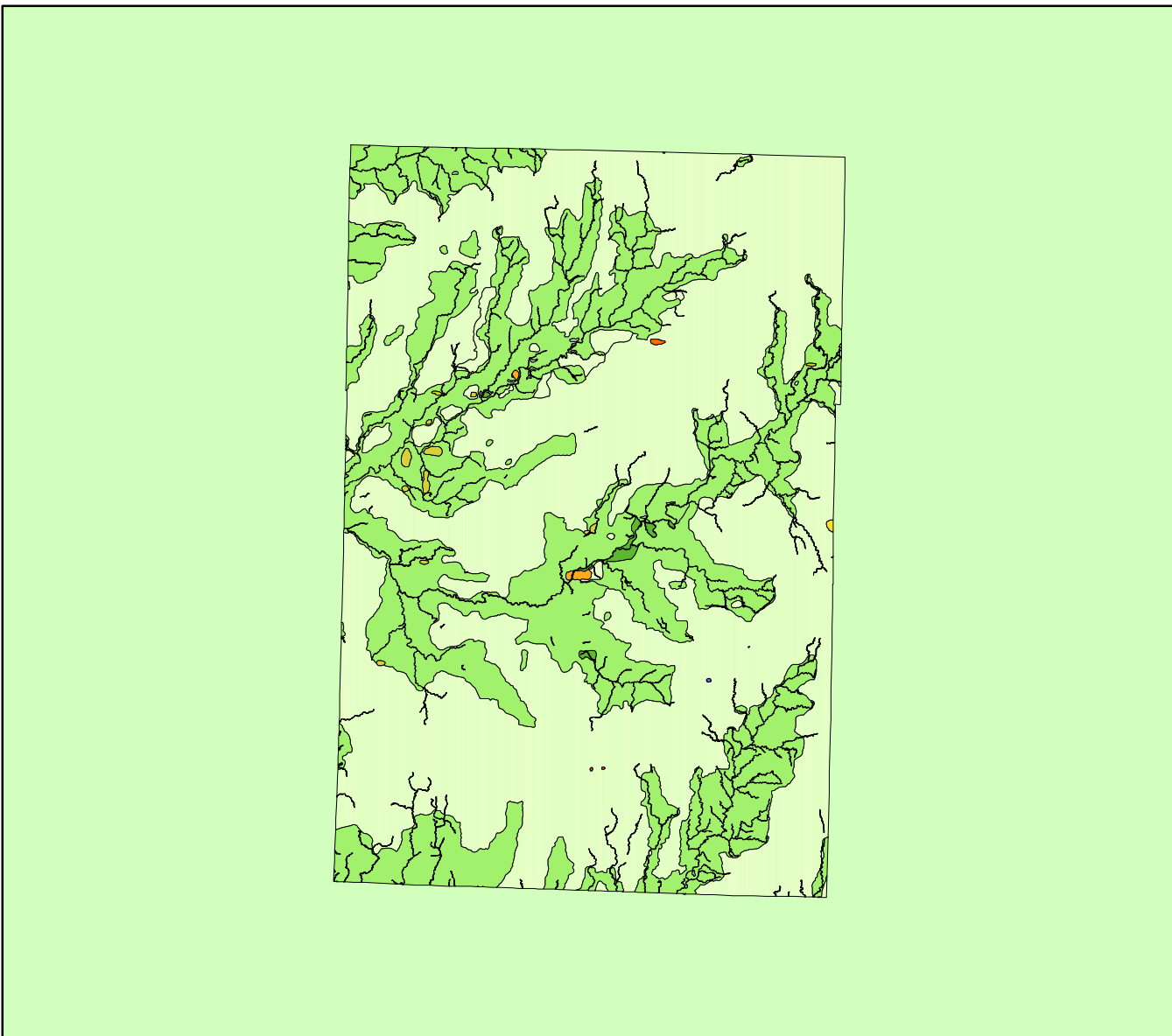


Land Cover of Macoupin County, Illinois in the Early 1800's



Legend

- barrens
- bottomland
- cultural
- forest
- marsh
- other wetland
- prairie
- slough
- topo/geo
- water
- wet prairie
- swamp

MAP	ACRES	HECTARES	PERCENT
barrens	971	393	0.2
bottomland	1151	466	0.2
cultural	0	0	0
forest	197967	80115	35.6
marsh	116	47	0
other wetland	0	0	0
prairie	348498	141033	62.7
slough	0	0	0
swamp	98	40	0
topo/ geo	208	84	0
water	6167	2496	1.1
wet prairie	385	156	0.1
TOTAL	555561	224829	100

