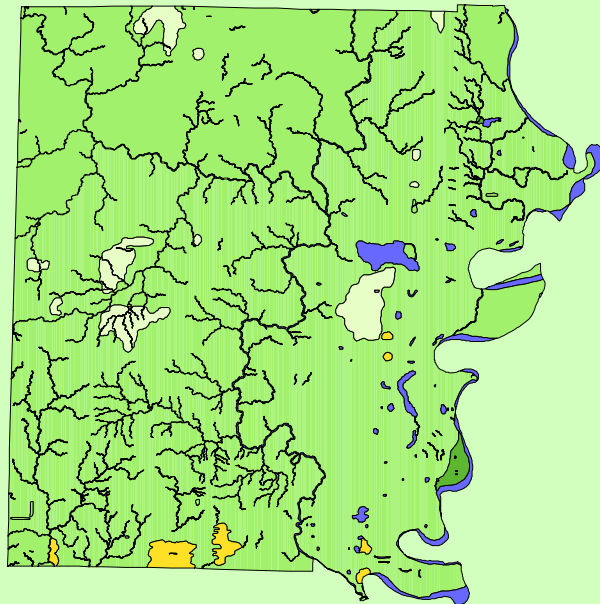


Land Cover of White County, Illinois in the Early 1800's



Legend

- barrens
- bottomland
- cultural
- forest
- marsh
- other wetland
- prairie
- slough
- topo/geo
- water
- wet prairie
- swamp

MAP	ACRES	HECTARES	PERCENT
barrens	0	0	0
bottomland	1022	414	0.3
cultural	13	5	0
forest	296033	119801	92.2
marsh	3	1	0
other wetland	440	178	0.1
prairie	8769	3549	2.7
slough	0	0	0
swamp	2694	1090	0.8
topo/ geo	1	1	0
water	12019	4864	3.7
wet prairie	0	0	0
TOTAL	320995	129903	100

