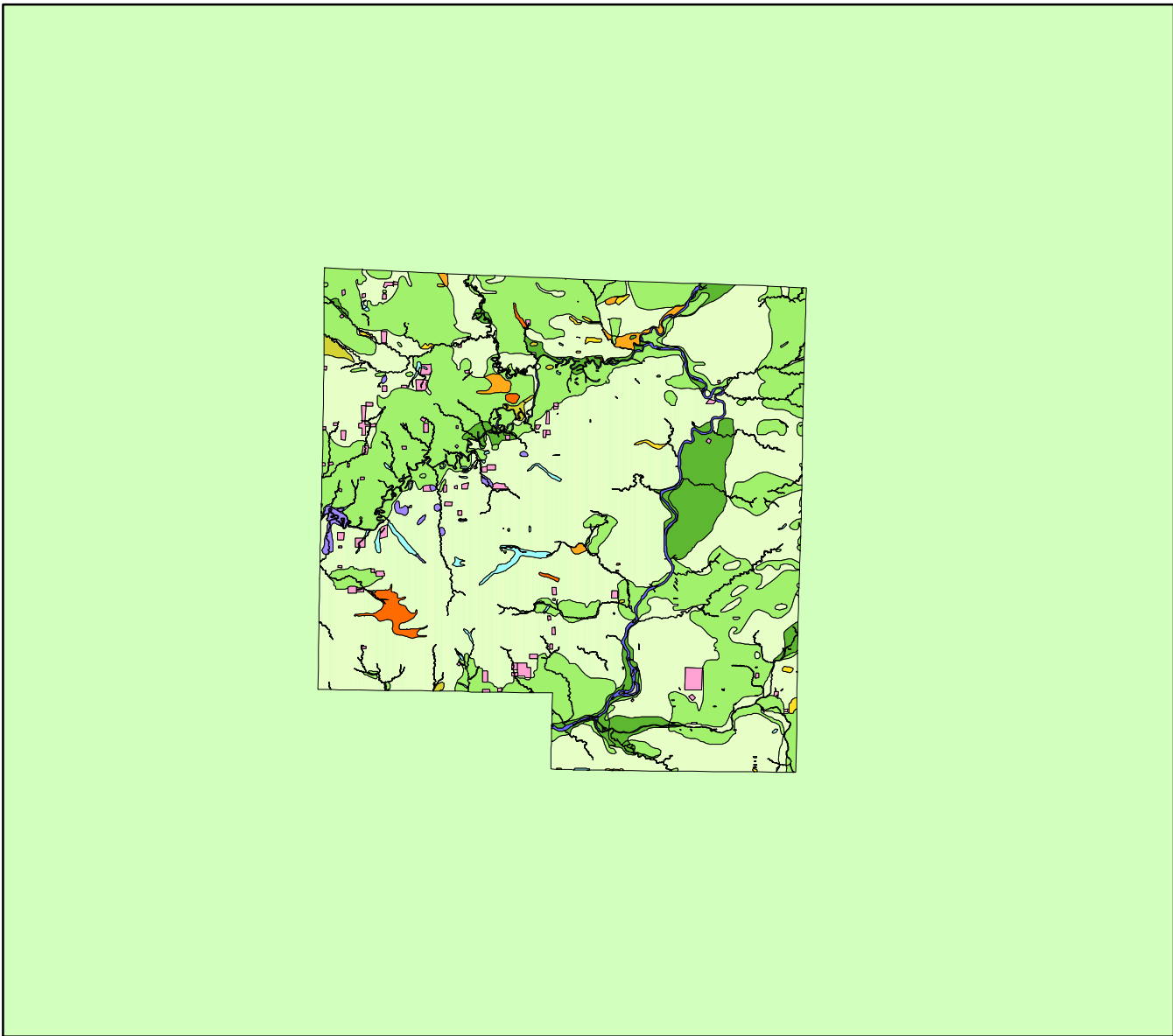


Land Cover of Winnebago County, Illinois in the Early 1800's



Legend

- barrens
- bottomland
- cultural
- forest
- marsh
- other wetland
- prairie
- slough
- topo/geo
- water
- wet prairie
- swamp

MAP	ACRES	HECTARES	PERCENT
barrens	1082	438	0.3
bottomland	16096	6514	4.8
cultural	3905	1580	1.2
forest	102006	41280	30.7
marsh	2141	867	0.6
other wetland	1287	521	0.4
prairie	194023	78519	58.4
slough	2482	1004	0.7
swamp	823	333	0.2
topo/ geo	196	79	0.1
water	6476	2621	1.9
wet prairie	1744	706	0.5
TOTAL	332260	134462	100

