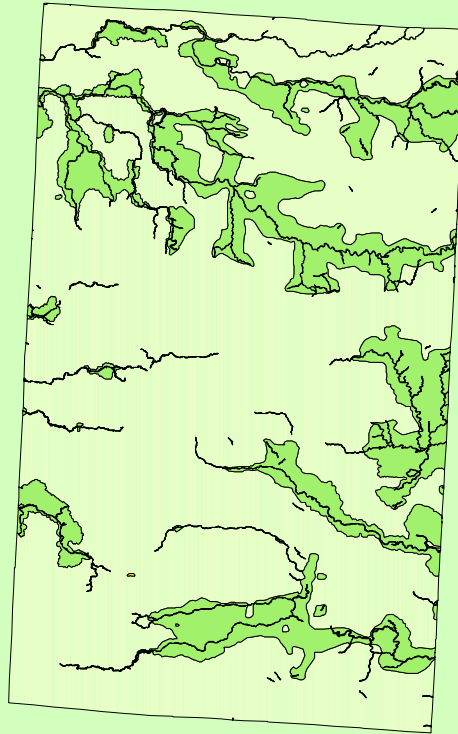


# Land Cover of Warren County, Illinois in the Early 1800's



## Legend

- barrens
- bottomland
- cultural
- forest
- marsh
- other wetland
- prairie
- slough
- topo/geo
- water
- wet prairie
- swamp

MAP	ACRES	HECTARES	PERCENT
barrens	0	0	0
bottomland	0	0	0
cultural	0	0	0
forest	71406	28897	20.5
marsh	0	0	0
other wetland	0	0	0
prairie	273744	110781	78.5
slough	0	0	0
swamp	19	8	0
topo/ geo	1	1	0
water	3336	1350	1
wet prairie	0	0	0
<b>TOTAL</b>	<b>348507</b>	<b>141036</b>	<b>100</b>

