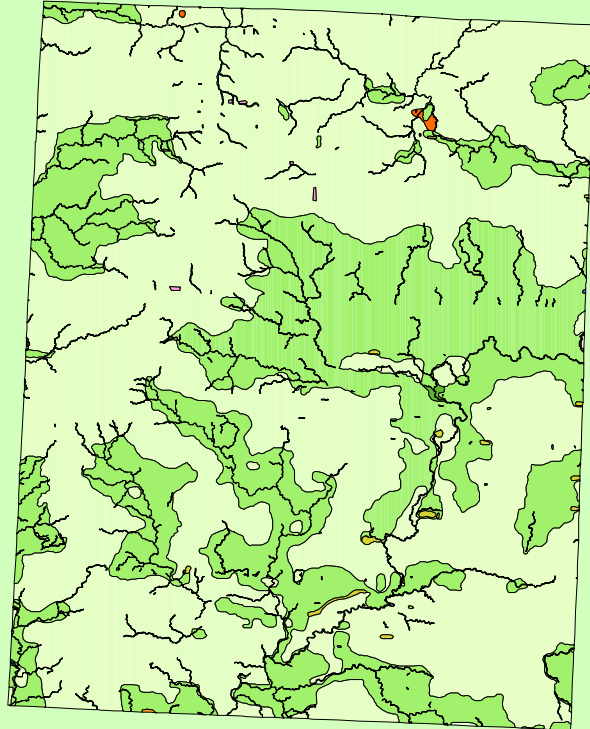


Land Cover of Knox County, Illinois in the Early 1800's



Legend

- barrens
- bottomland
- cultural
- forest
- marsh
- other wetland
- prairie
- slough
- topo/geo
- water
- wet prairie
- swamp

MAP	ACRES	HECTARES	PERCENT
barrens	785	318	0.2
bottomland	227	92	0
cultural	122	49	0
forest	153025	61927	33.2
marsh	290	117	0.1
other wetland	27	11	0
prairie	301551	122034	65.4
slough	191	77	0
swamp	0	0	0
topo/geo	1	1	0
water	4667	1889	1
wet prairie	45	18	0
TOTAL	460931	186533	100

