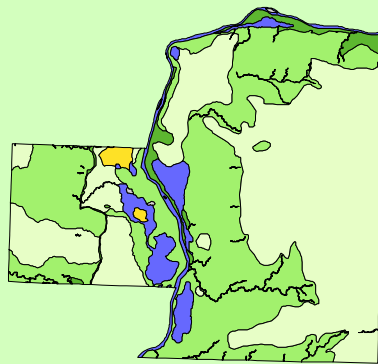


Land Cover of Putnum County, Illinois in the Early 1800's



Legend

- barrens
- bottomland
- cultural
- forest
- marsh
- other wetland
- prairie
- slough
- topo/geo
- water
- wet prairie
- swamp

MAP	ACRES	HECTARES	PERCENT
barrens	0	0	0
bottomland	3015	1220	2.7
cultural	0	0	0
forest	44817	18137	40.7
marsh	0	0	0
other wetland	0	0	0
prairie	54076	21884	49.1
slough	0	0	0
swamp	822	333	0.7
topo/ geo	100	40	0.1
water	7355	2976	6.7
wet prairie	7	3	0
TOTAL	110191	44593	100

