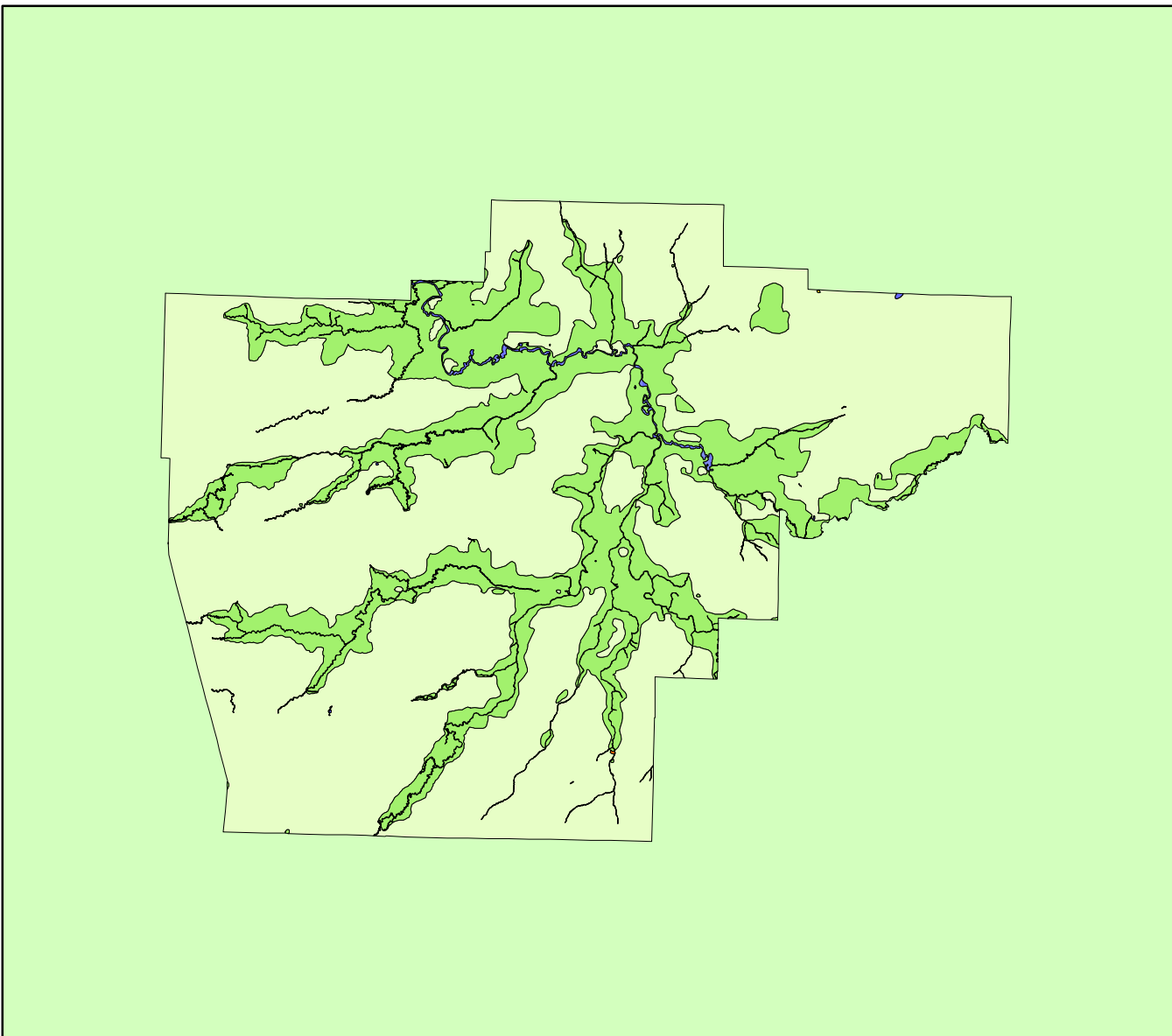


Land Cover of Sangamon County, Illinois in the Early 1800's



Legend

- barrens
- bottomland
- cultural
- forest
- marsh
- other wetland
- prairie
- slough
- topo/geo
- water
- wet prairie
- swamp

MAP	ACRES	HECTARES	PERCENT
barrens	0	0	0
bottomland	0	0	0
cultural	0	0	0
forest	144265	58382	25.7
marsh	18	7	0
other wetland	0	0	0
prairie	411243	166425	73.2
slough	0	0	0
swamp	9	3	0
topo/ geo	0	0	0
water	5896	2386	1.1
wet prairie	0	0	0
TOTAL	561431	227204	100

