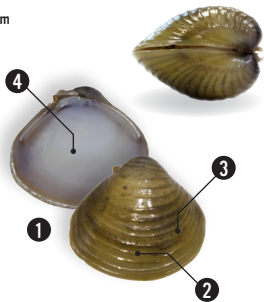


INFLATED SHELL

COMPRESSED SHELL

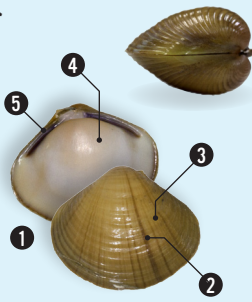
45 mm



Corbicula fluminea

1. rounded to slightly triangular shape; 2. shell yellowish brown; 3. numerous ridges that are evenly spaced, concentric, and elevated; and 4. usually white nacre (can darken with age)

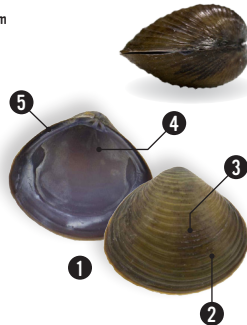
20 mm*



UNKNOWN Asian Clam

1. triangular shape; 2. shell yellow with fine pinkish-rust/ fuchsia colored rays radiating from the umbo; 3. ridges similar in pattern to *C. largillierti*, but shallower; 4. nacre creamy white; and 5. lateral teeth purple

35 mm



Corbicula largillierti

1. pyramidal shell; 2. shell dark olive brown; 3. ridges tighter and less pronounced than *C. fluminea*; 4. nacre purple; and 5. lateral teeth purple

*Maximum size unknown, but have seen <20 mm

