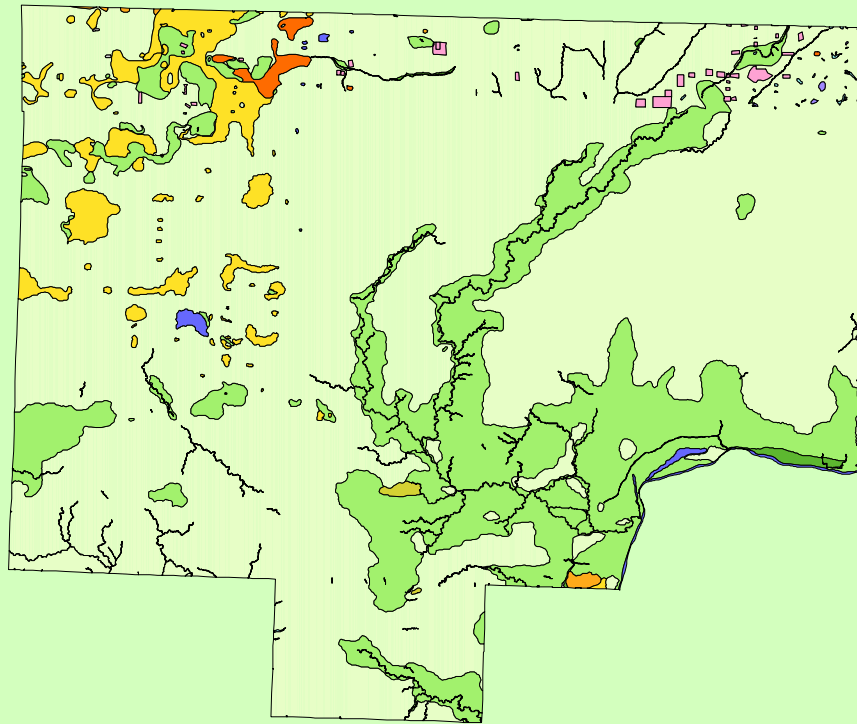


Land Cover of Bureau County, Illinois in the Early 1800's



Legend

- barrens
- bottomland
- cultural
- forest
- marsh
- other wetland
- prairie
- slough
- topo/geo
- water
- wet prairie
- swamp

MAP	ACRES	HECTARES	PERCENT
barrens	558	226	0.1
bottomland	1254	508	0.2
cultural	1548	626	0.3
forest	109404	44274	19.6
marsh	2100	850	0.4
other wetland	88	36	0
prairie	420941	170349	75.2
slough	204	83	0
swamp	18958	7672	3.4
topo/ geo	46	19	0
water	3815	1544	0.7
wet prairie	654	264	0.1
TOTAL	559570	226451	100

