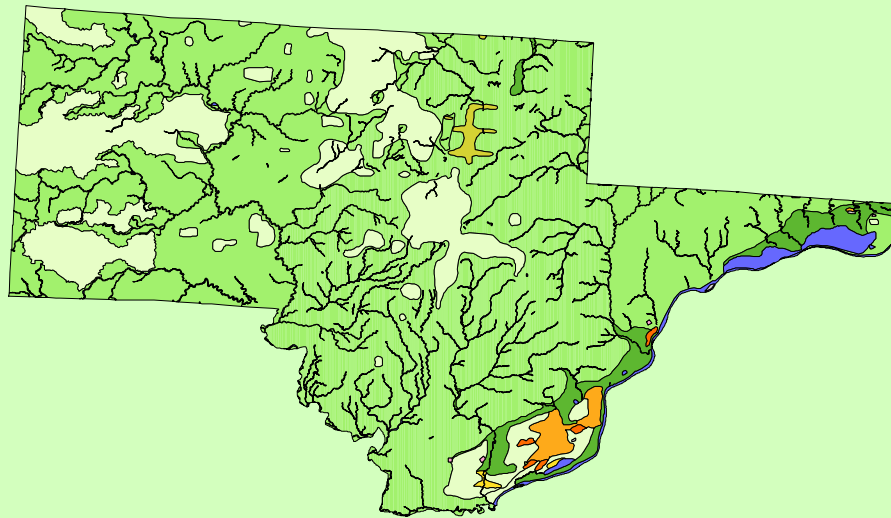


Land Cover of Schuyler County, Illinois in the Early 1800's



Legend

- barrens
- bottomland
- cultural
- forest
- marsh
- other wetland
- prairie
- slough
- topo/geo
- water
- wet prairie
- swamp

MAP	ACRES	HECTARES	PERCENT
barrens	1206	488	0.4
bottomland	9068	3670	3.2
cultural	76	31	0
forest	209598	84822	74.1
marsh	451	183	0.2
other wetland	0	0	0
prairie	49797	20152	17.6
slough	0	0	0
swamp	292	118	0.1
topo/ geo	67	27	0
water	9875	3996	3.5
wet prairie	2418	979	0.9
TOTAL	282848	114465	100

