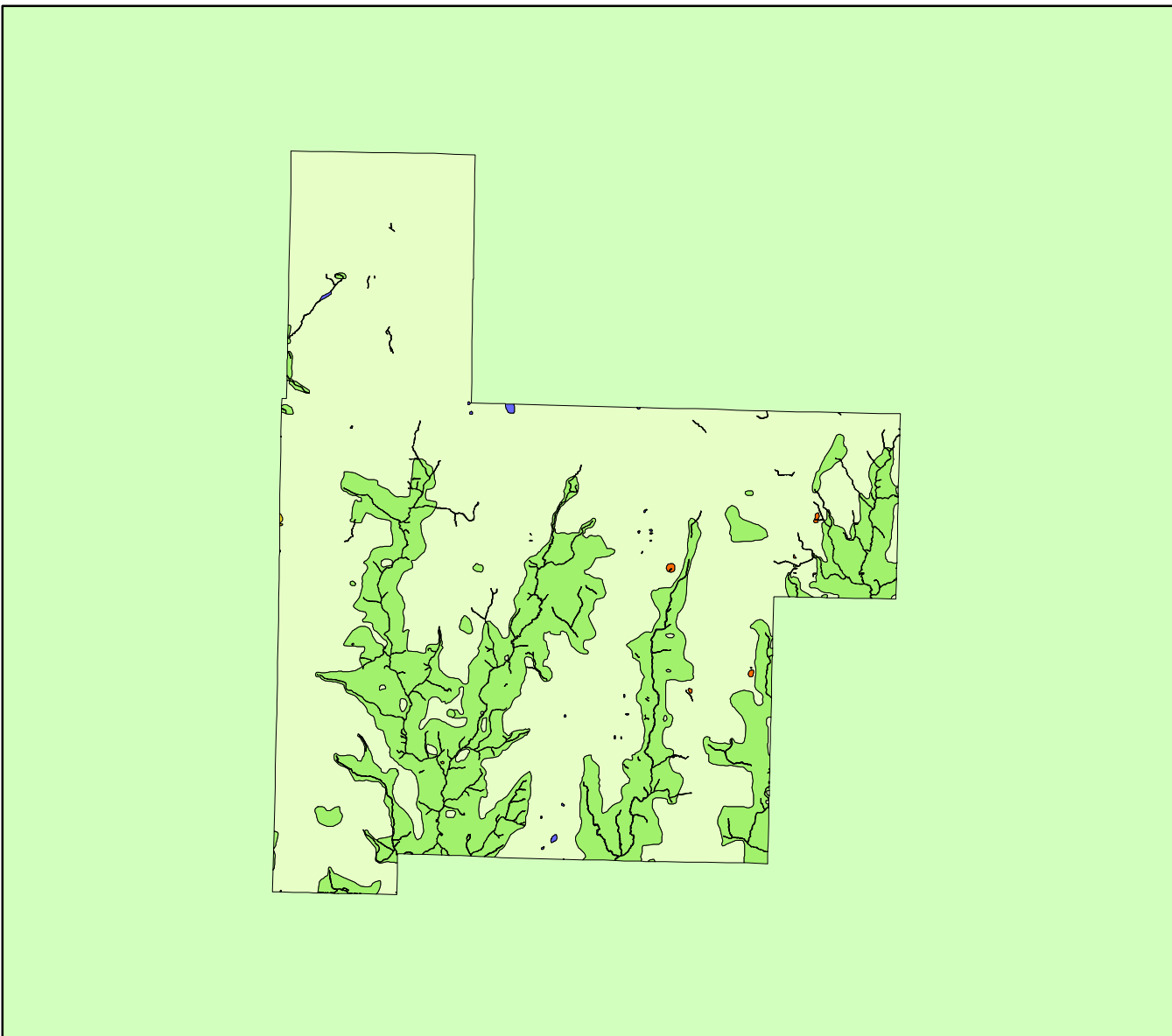


# Land Cover of Montgomery County, Illinois in the Early 1800's



**Legend**

- barrens
- bottomland
- cultural
- forest
- marsh
- other wetland
- prairie
- slough
- topo/geo
- water
- wet prairie
- swamp

MAP	ACRES	HECTARES	PERCENT
barrens	0	0	0
bottomland	0	0	0
cultural	0	0	0
forest	112108	45369	24.7
marsh	215	87	0
other wetland	0	0	0
prairie	338657	137050	74.5
slough	8	3	0
swamp	47	19	0
topo/ geo	0	0	0
water	3298	1335	0.7
wet prairie	0	0	0
<b>TOTAL</b>	<b>454333</b>	<b>183863</b>	<b>100</b>

