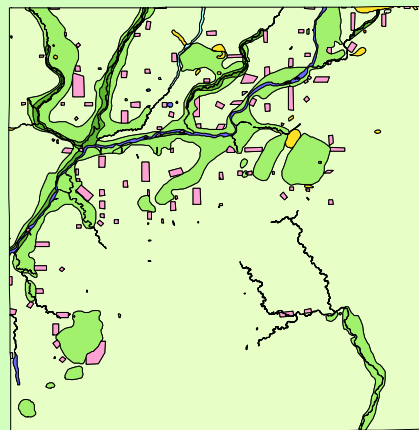


Land Cover of Kendall County, Illinois in the Early 1800's



Legend

- barrens
- bottomland
- cultural
- forest
- marsh
- other wetland
- prairie
- slough
- topo/geo
- water
- wet prairie
- swamp

MAP	ACRES	HECTARES	PERCENT
barrens	0	0	0
bottomland	2846	1152	1.4
cultural	4375	1770	2.1
forest	24811	10041	12
marsh	10	4	0
other wetland	0	0	0
prairie	171143	69260	83
slough	229	93	0.1
swamp	812	329	0.4
topo/ geo	38	15	0
water	1930	781	0.9
wet prairie	0	0	0
TOTAL	206193	83444	100

