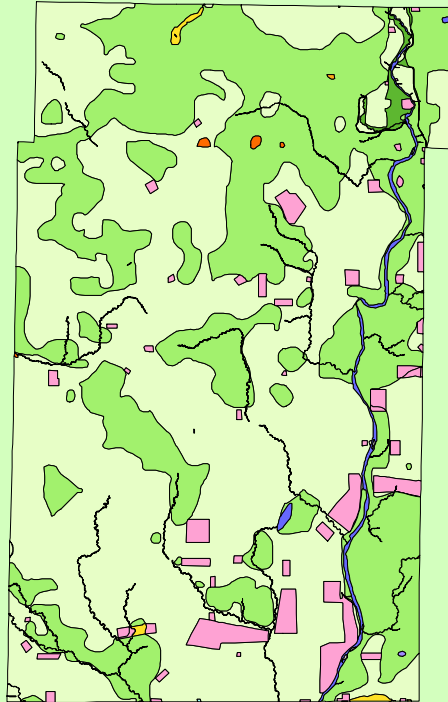


Land Cover of Kane County, Illinois in the Early 1800's



Legend

- barrens
- bottomland
- cultural
- forest
- marsh
- other wetland
- prairie
- slough
- topo/geo
- water
- wet prairie
- swamp

MAP	ACRES	HECTARES	PERCENT
barrens	0	0	0
bottomland	1591	644	0.5
cultural	12875	5210	3.8
forest	125805	50912	37.5
marsh	261	106	0.1
other wetland	31	13	0
prairie	190053	76912	56.7
slough	9	4	0
swamp	707	286	0.2
topo/ geo	52	21	0
water	3841	1554	1.1
wet prairie	31	13	0
TOTAL	335255	135674	100

