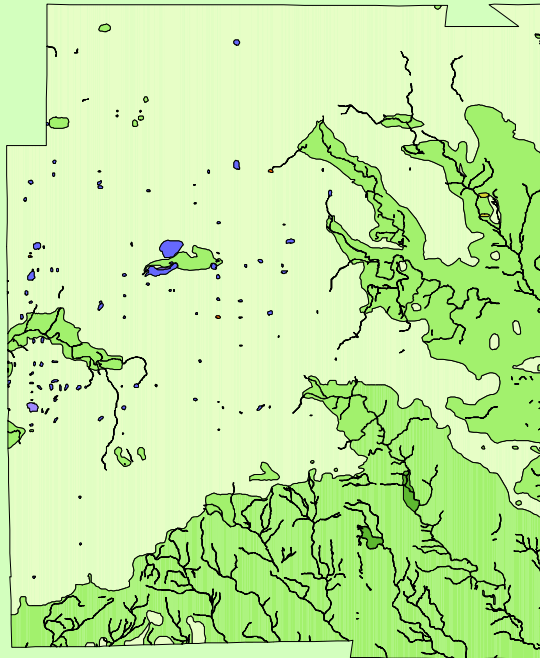


Land Cover of Edgar County, Illinois in the Early 1800's



Legend

- barrens
- bottomland
- cultural
- forest
- marsh
- other wetland
- prairie
- slough
- topo/geo
- water
- wet prairie
- swamp

MAP	ACRES	HECTARES	PERCENT
barrens	63	26	0
bottomland	647	262	0.2
cultural	0	0	0
forest	142024	57475	35.6
marsh	27	11	0
other wetland	110	45	0
prairie	251643	101837	63.1
slough	0	0	0
swamp	0	0	0
topo/geo	1	0	0
water	4390	1777	1.1
wet prairie	0	0	0
TOTAL	398906	161432	100

