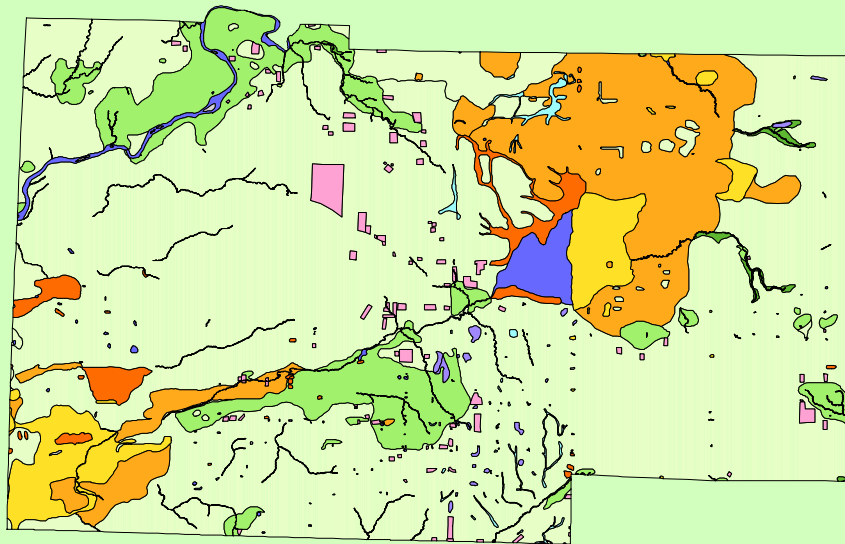


Land Cover of Lee County, Illinois in the Early 1800's



Legend

- barrens
- bottomland
- cultural
- forest
- marsh
- other wetland
- prairie
- slough
- topo/geo
- water
- wet prairie
- swamp

MAP	ACRES	HECTARES	PERCENT
barrens	0	0	0
bottomland	1287	521	0.3
cultural	5393	2183	1.2
forest	40239	16284	8.6
marsh	8293	3356	1.8
other wetland	956	387	0.2
prairie	324250	131220	69.5
slough	1836	743	0.4
swamp	18702	7569	4
topo/ geo	160	65	0
water	8607	3483	1.8
wet prairie	56614	22911	12.1
TOTAL	466338	188721	100

