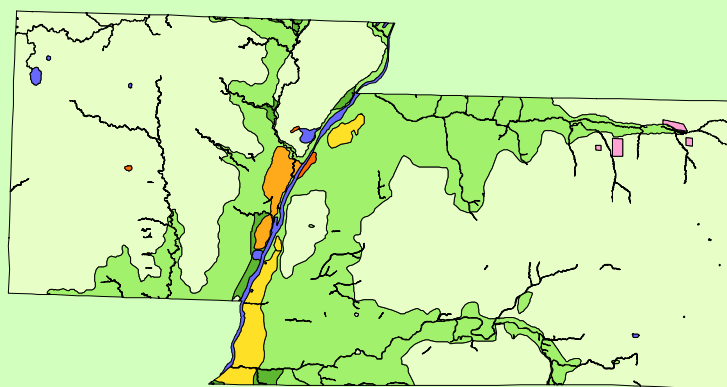


Land Cover of Marshall County, Illinois in the Early 1800's



Legend

- barrens
- bottomland
- cultural
- forest
- marsh
- other wetland
- prairie
- slough
- topo/geo
- water
- wet prairie
- swamp

MAP	ACRES	HECTARES	PERCENT
barrens	0	0	0
bottomland	1776	719	0.7
cultural	448	181	0.2
forest	65622	26557	25.7
marsh	221	90	0.1
other wetland	11	4	0
prairie	177368	71779	69.5
slough	3	1	0
swamp	4120	1667	1.6
topo/ geo	0	0	0
water	3789	1534	1.5
wet prairie	1981	802	0.8
TOTAL	255339	103333	100

