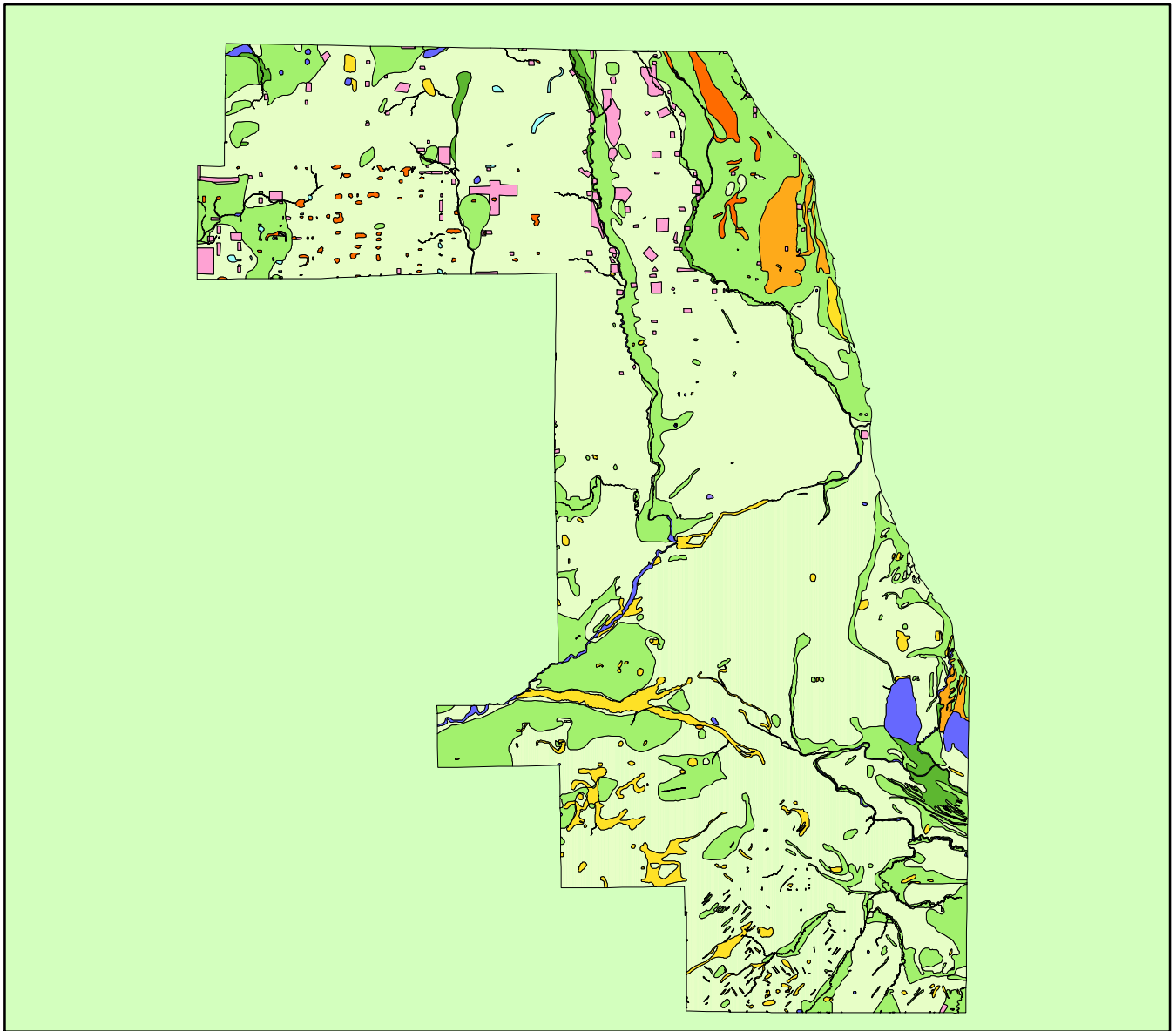


Land Cover of Cook County, Illinois in the Early 1800's



Legend

- barrens
- bottomland
- cultural
- forest
- marsh
- other wetland
- prairie
- slough
- topo/geo
- water
- wet prairie
- swamp

MAP	ACRES	HECTARES	PERCENT
barrens	0	0	0
bottomland	6415	2596	1.1
cultural	9001	3643	1.5
forest	126019	50998	20.7
marsh	4880	1975	0.8
other wetland	63	26	0
prairie	430240	174113	70.5
slough	740	300	0.1
swamp	15262	6176	2.5
topo/ geo	57	23	0
water	9095	3681	1.5
wet prairie	8226	3329	1.3
TOTAL	610000	246859	100

