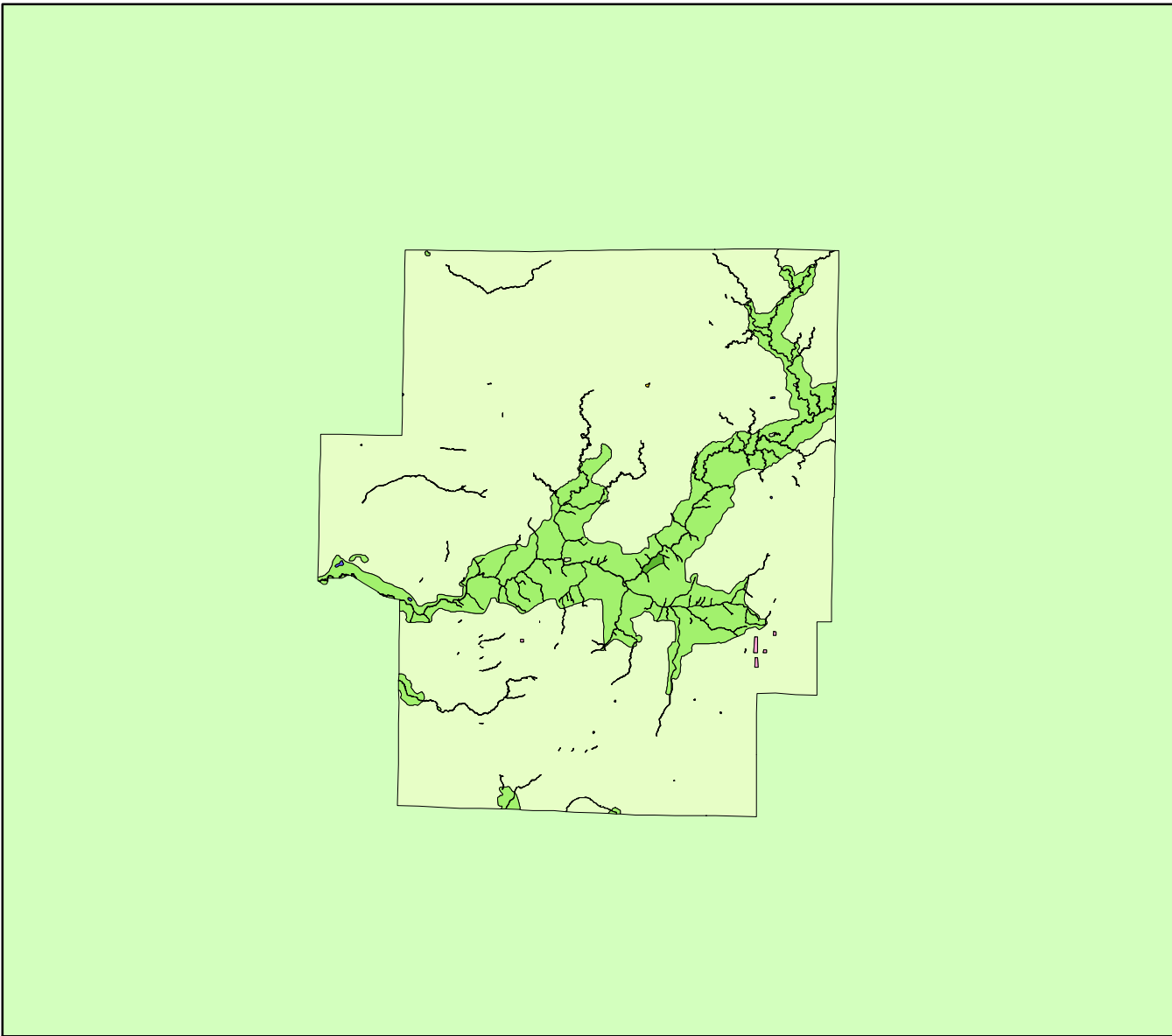


Land Cover of Macon County, Illinois in the Early 1800's



Legend

- barrens
- bottomland
- cultural
- forest
- marsh
- other wetland
- prairie
- slough
- topo/geo
- water
- wet prairie
- swamp

MAP	ACRES	HECTARES	PERCENT
barrens	0	0	0
bottomland	274	111	0.1
cultural	166	67	0
forest	56507	22868	15.1
marsh	0	0	0
other wetland	0	0	0
prairie	315578	127710	84.2
slough	2	1	0
swamp	24	10	0
topo/ geo	4	2	0
water	2385	965	0.6
wet prairie	0	0	0
TOTAL	374940	151733	100

