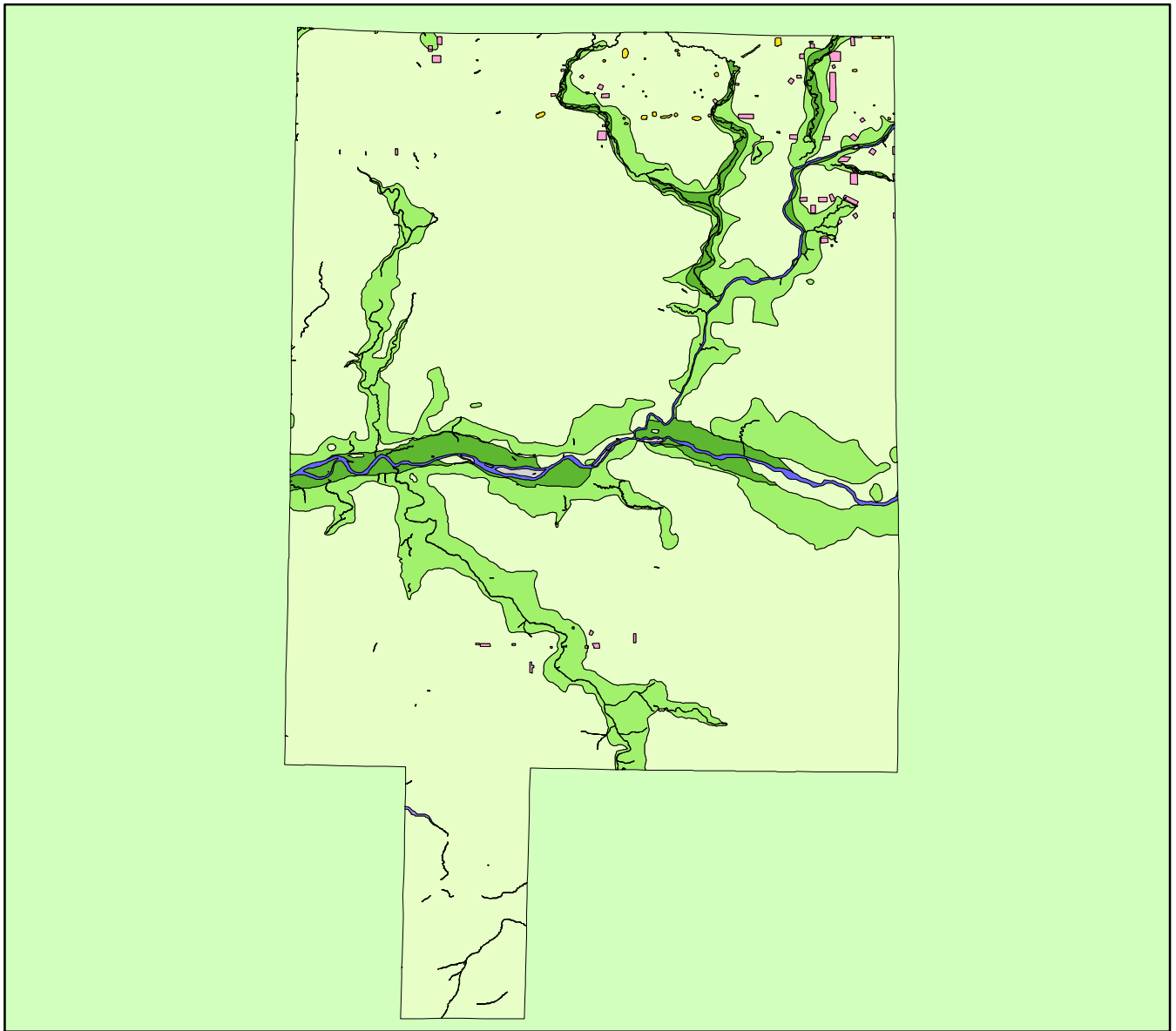


Land Cover of La Salle County, Illinois in the Early 1800's



Legend	
	barrens
	bottomland
	cultural
	forest
	marsh
	other wetland
	prairie
	slough
	topo/geo
	water
	wet prairie
	swamp

MAP	ACRES	HECTARES	PERCENT
barrens	0	0	0
bottomland	21194	8577	2.9
cultural	2144	868	0.3
forest	101543	41093	13.8
marsh	4	2	0
other wetland	116	47	0
prairie	600981	243209	81.8
slough	0	0	0
swamp	560	227	0.1
topo/ geo	745	302	0.1
water	7386	2989	1
wet prairie	0	0	0
TOTAL	734673	297313	100

