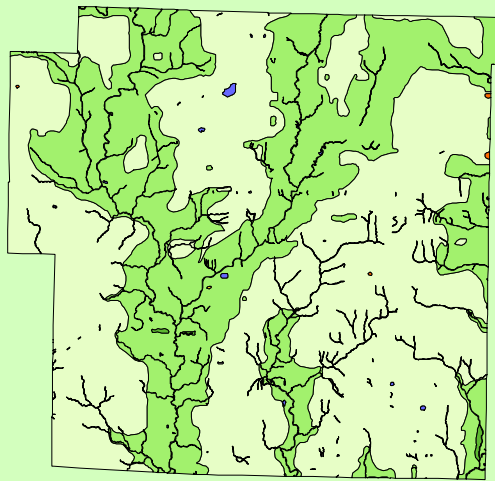


# Land Cover of Bond County, Illinois in the Early 1800's



## Legend

- barrens
- bottomland
- cultural
- forest
- marsh
- other wetland
- prairie
- slough
- topo/geo
- water
- wet prairie
- swamp

| MAP           | ACRES         | HECTARES     | PERCENT    |
|---------------|---------------|--------------|------------|
| barrens       | 0             | 0            | 0          |
| bottomland    | 286           | 116          | 0.1        |
| cultural      | 0             | 0            | 0          |
| forest        | 93732         | 37932        | 38.2       |
| marsh         | 70            | 28           | 0          |
| other wetland | 0             | 0            | 0          |
| prairie       | 147227        | 59581        | 60.1       |
| slough        | 9             | 4            | 0          |
| swamp         | 8             | 3            | 0          |
| topo/ geo     | 21            | 8            | 0          |
| water         | 3733          | 1511         | 1.5        |
| wet prairie   | 0             | 0            | 0          |
| <b>TOTAL</b>  | <b>245086</b> | <b>99183</b> | <b>100</b> |

